



# The landscape of Flanders Fields

A WITNESS OF WORLD WAR I

© Nick Mol

# Contents

## INTRODUCTION

Introduction	> 3
Flanders Fields: 15 most visited sites + map	> 4
WWI: timeline	> 6

## WORLD WAR I SITES

Introduction & Tourist Offices	> 8
Ypres & surroundings	> 10
Passchendaele/Zonnebeke	> 16
Messines	> 19
Heuvelland/Wijtschate	> 20
Poperinge	> 22
Diksmuide & surroundings	> 24
Nieuwpoort	> 27
Commonwealth War Graves Commission	> 28
Other interesting sites in Flanders Fields	> 30

## THEME YEAR 2023-2024

Landscapes. Feel Flanders Fields.	> 31
Calendar of events 2023-2024	> 32

## DISCOVER THE BATTLEFIELDS

Getting there and around	> 38
Gastronomy in Flanders Fields	> 39
Organised battlefield tours	> 40
Explore WWI outside the classroom	> 42
Flanders Fields Accessible to all	> 44
Suggestions for car or coach itineraries	> 45
Hotels	> 49
Youth accommodation	> 55
Trade & press information	> 58



Wheelchair  
accessible



Facilities for  
people with visual  
impairments



Facilities for  
visitors with  
a hearing  
impairment



Facilities for  
visitors with  
a learning  
impairment

# INTRODUCTION

Welcome to the latest edition of the Flanders Fields trade brochure for 2023-24, produced by **VISITFLANDERS** for our international travel trade and media contacts.

The first edition of this brochure was produced in 2013, ahead of the centenary of the First World War, and provided a comprehensive tool kit for tour operators, and other interested parties, to plan commemorative WW1 tours. Over 2 million international visitors travelled to Flanders Fields during the period from 2014-2018, and we believe this brochure was an invaluable source of inspiration and information.

We saw considerable investment in the region's tourism product, both leading up to and during the centenary, including new and refurbished museums, a wealth of special exhibitions and events themed to different anniversaries, and a major expansion into the provision for visitors with additional accessibility needs. In the years following the centenary, **VISITFLANDERS**, and its partners in the region, have continued to invest in infrastructure and permanent product, including the Brothers In Arms memorial and the Canada Gate portal of remembrance. There have also been updates and improvements made to the area's museums, such as the In Flanders Fields Museum

and Memorial Museum Passchendaele 1917; many of the region's private museums have also invested significantly in expansions to their offer.

Visitors returning to Flanders Fields, perhaps after an enforced absence due to the Covid pandemic, will see a wealth of welcome changes, to allow them to continue to commemorate the events of the First World War in the landscapes where the battles took place.

From April 2023-August 2024, Flanders Fields will host **Landscapes**, a special 'theme year'. During this year, we invite visitors to reflect on how these landscapes, which still bear the scars of war over 100 years later, bore witness to the brutal conflict, with a dedicated programme of special events and exhibitions. This period will also see continued improvement to some permanent product, including the renovation of the Yorkshire Trench and dug-out.

We hope this latest edition of the trade brochure, containing information on all of the region's permanent WW1 product, as well as full details of the theme year, will again provide inspiration and be a valuable tool, and we look forward to welcoming our trade and media partners, as well as international visitors, to Flanders Fields.

# Europe, Flanders, Flanders Fields





# 15 KEY SITES IN FLANDERS FIELDS



1 In Flanders Fields Museum



2 Polygon Wood



3 German Cemetery Vladslo



4 Menin Gate



5 Lijssenthoek Military Cemetery & Visitor Centre



6 German Cemetery Langemark



7 Hill 60 & Caterpillar Crater



8 Talbot House



9 Westfront Nieuwpoort Visitor Centre & Goose Foot Lock Complex



10 Memorial Museum Passchendaele 1917



11 Yser Tower Museum



12 Island of Ireland Peace Park



13 Tyne Cot Cemetery & Visitor Centre



14 Trench of Death



15 Essex Farm Cemetery





**28 June 1914**

Assassination of Archduke Franz Ferdinand in Sarajevo



**28 July 1914**

Austria-Hungary declares war on Serbia.



**4 August 1914**

German army invades Belgium. United Kingdom declares war on Germany.

**22 April 1915**

First use of chlorine gas by the German army in Langemark.

1914

1915

1916

**19 October - 22 November 1914**

First Battle of Ypres



**22 April - 25 May 1915**

Second Battle of Ypres



**26 & 29 October 1914**

Nieuwpoort sluice gates are opened to flood the plain and halt the German advance.







**6 April 1917**

United States declares war on Germany



**7 -14 June 1917**

Battle of Messines



**12 July 1917**

First use of mustard gas



**April 1918**

German spring offensive. Major attack by the Germans at Merkem and Kemmel.

**28 September - 11 November 1918**

The final offensive. Reinforced by the Americans, a series of Allied offensives pushes the Germans back.

**21 February - 20 December 1916**

Battle of Verdun (France)

1917

1918

**1 July - 18 November 1916**

Battle of the Somme (France)

**24 - 25 June 1917**

First shot of cannon Lange Max



**31 July - 10 November 1917**

Third Battle of Ypres/ Battle of Passchendaele



**11 November 1918**

Armistice. End of WWI at 11 o'clock in the morning.



Timeline



# WORLD WAR I SITES

The First World War left an indelible impact on the area now known as **Flanders Fields**, transforming the region into one of the most thought-provoking and inspirational war landscapes in the world. In 1914, local farmers witnessed their fields turning into a battleground for one of the most terrible conflicts in human history. Over 600,000 men and women died on Belgian soil during the First World War. The military cemeteries that dot these same fields are a sad reminder of the tragic cost of this "war to end all wars".

British and Commonwealth soldiers passed through the city of **Ypres** on their way to the battlefields along the Ypres Salient. Reduced to rubble by constant bombardment, the town came to symbolise the meaningless slaughter of the Great War. After the war, Ypres rose like a phoenix from its ashes, rebuilt as an almost perfect copy of the medieval city that had been destroyed during the fighting. The famous **Menin Gate** stands at one entrance to the city. After being built by the Commonwealth War Graves Commission, the Memorial was inaugurated in 1927, bearing the names of more than 54,000 soldiers who died before 16 August 1917 and have no known grave. Hundreds of thousands of soldiers passed through the gate on the way to the front, many of them never to return. **The Last Post** will continue to be sounded here, nightly, in perpetuity, by the buglers of the Last Post Association in remembrance of those men.

Around Ypres there are over a hundred **military cemeteries**, the resting place of those soldiers and airmen. The land on which the Commonwealth cemeteries are located was given in gratitude by the Belgian nation. All cemeteries and commemorated soldiers can be researched on [www.cwgc.org](http://www.cwgc.org). There are also German, French, Belgian, and US cemeteries, as well as other memorials and war relics.

Other towns and villages in Flanders Fields were also completely destroyed. The most well-known village is **Passchendaele**. It was here that in 1917 the Allied army fought for several months in a desperate bid to break the German line. During the battle, the Allied forces lost nearly 300,000 men in capturing this ruined village after advancing over a few miles of shell-blasted mud. They soon began referring to the village as "Passion-dale": the valley of suffering. In the neighbouring village of **Zonnebeke** you can see the cost of this 'victory' in human life: **Tyne Cot Cemetery**, with almost 12,000 tombstones.

Another well-known village is **Messines**. On 7 June 1917, the Battle of Messines, the "Battle of the Mines", started with the Allied Army simultaneously exploding 19 underground mines.

## In Flanders fields

In Flanders fields the poppies blow  
Between the crosses, row on row,  
That mark our place; and in the sky  
The larks, still bravely singing, fly  
Scarce heard amid the guns below.  
We are the Dead. Short days ago  
We lived, felt dawn, saw sunset glow,  
Loved, and were loved, and now we lie  
In Flanders fields.  
Take up our quarrel with the foe:  
To you from failing hands we throw  
The torch; be yours to hold it high.  
If ye break faith with us who die  
We shall not sleep, though poppies grow  
In Flanders fields.

*Major John McCrae – 1915*





It was here that Irish Unionist and Nationalists fought side by side, along with New Zealanders and Australians, who played a significant role in the success of the Messines offensive. This battle also took place across the area of **Heuvelland** and **Wijtschate**. **Kemmel Hill** provides a view over the countryside and nearby is the American monument erected in 1929 and a Demarcation Stone erected after the war to mark the furthest point to which the Germans advanced.

In the north of the area, the towns of **Nieuwpoort** and **Diksmuide** were also totally ruined. It was in Nieuwpoort that the sluices were opened and the Yser river plain and front region was flooded at the end of 1914. This inspired plan played a crucial role in the defence of the French Channel Ports. **Diksmuide's** Yser Tower, which houses a museum focusing on the Belgian-German confrontation in

the First World War, also provides a unique viewing platform across Flanders Fields.

Behind the front line was **Poperinge**, "Pop" as it was known to British soldiers, an important rail centre and gateway to the battlefields. It was a place of temporary camps and hospitals where soldiers came to rest from the trenches or for medical treatment. There were also shops, restaurants, hotels, pubs, cinemas, and theatres at their disposal. It was here that an army chaplain, the Reverend Philip "Tubby" Clayton, founded **Talbot House**, an Every-Man's Club, a place to relax where everybody was welcome, regardless of rank. Today, Talbot House is a "living museum" and is still a place to stay.

[www.flandersfields.be/en](http://www.flandersfields.be/en)

## TOURIST OFFICES IN FLANDERS FIELDS

**i** **Visitor centre for Ypres (Ieper) and Flanders Fields**  
Cloth Hall, Grote Markt, 34, 8900 Ypres

**Contact**  
+ 32 (0)57 239 220  
[toerisme@ieper.be](mailto:toerisme@ieper.be)

**Website**  
[www.visitypres.be](http://www.visitypres.be)

**i** **Tourist Office Nieuwpoort**  
Marktplaats 7, 8620 Nieuwpoort

**Contact**  
+ 32 (0)58 22 44 44  
[info@nieuwpoort.be](mailto:info@nieuwpoort.be)

**Website**  
[www.nieuwpoort.be](http://www.nieuwpoort.be)

**i** **CWGC Ieper Information Centre**  
Menensestraat 33, 8900 Ieper

**Contact**  
[enquiries@cwgc.org](mailto:enquiries@cwgc.org)

**Website**  
[www.cwgc.org](http://www.cwgc.org)

**i** **Tourist Office Diksmuide**  
Grote Markt 6, 8600 Diksmuide

**Contact**  
+ 32 (0)51 79 30 50  
[toerisme@diksmuide.be](mailto:toerisme@diksmuide.be)

**Website**  
[tourism.diksmuide.be](http://tourism.diksmuide.be)

**i** **Tourist Office Passchendaele/ Zonnebeke**  
Berten Pijlstraat 5A, 8980 Zonnebeke

**Contact**  
+ 32 (0)51 77 04 41  
[toerisme@zonnebeke.be](mailto:toerisme@zonnebeke.be)

**Website**  
[www.zonnebeke.be](http://www.zonnebeke.be)

**i** **Tourist Office Heuvelland**  
Sint-Laurentiusplein 1, 8950 Kemmel

**Contact**  
+ 32 (0)57 45 04 55  
[toerisme@heuvelland.be](mailto:toerisme@heuvelland.be)

**Website**  
[www.heuvelland.be](http://www.heuvelland.be)

**i** **Tourist Office Poperinge**  
Grote Markt 1, 8970 Poperinge

**Contact**  
+ 32 (0)57 34 66 76  
[toerisme@poperinge.be](mailto:toerisme@poperinge.be)

**Website**  
[www.toerismepoperinge.be](http://www.toerismepoperinge.be)



# YPRES & SURROUNDINGS



## IN FLANDERS FIELDS MUSEUM



The permanent exhibition focuses on the personal stories of ordinary people and establishes a link to the landscape of WWI in Flanders Fields. More than 2,000 original objects and documents are on display and a new scenography highlights the most recent museum applications, including audioguides, touch screens, interactive poppy bracelets, video projections, and soundscapes. In addition, visitors can climb the belfry for a wonderful view of what was once a completely devastated region.

### **i Address**

Cloth Hall  
Grote Markt 34,  
8900 Ypres

### **Contact**

+32 (0)57 239 220  
[flandersfields@ieper.be](mailto:flandersfields@ieper.be)

### **Website**

[www.inflandersfields.be](http://www.inflandersfields.be)

### **i Opening hours**

1 April - 30 September:  
Mon - Fri: 10 am - 6 pm  
Sat - Sun: 10 am - 5 pm

1 October - 31 March:  
Tue - Sun: 10 am - 5 pm  
Closed on Monday

### **i Price**

Adults: €10.00  
Youth (ages 19-25): €6.00  
Children (ages 7-18): €5.00  
Children under 7: free  
Groups (min. 15): €8.00  
Schools (min. 15): €4.50  
Suppl. to visit the belfry: €2.00  
Guides € 90.00 (2 hours – max. 25 p.)  
Groups must book at least  
14 days in advance.





## THE MENIN GATE AND THE LAST POST



The most famous Commonwealth War Graves Commission memorial bears the names of 54,896 soldiers who were reported missing in the Ypres Salient between the outbreak of the war and 15 August 1917. Due to a lack of space, after that date names were listed on the memorial at Tyne Cot. An exception was made for Australian and Canadian soldiers who were missing in action until the end of the war. There are no New Zealand names, as their missing are commemorated in cemeteries near to where they died. Every night at eight o'clock sharp, the resounding bugle call of the volunteers of the Ypres Last Post Association, who are members of the Ypres Voluntary Fire Brigade, sounds as a tribute to the fallen under the Menin Gate. The Menin Gate will be restored in 2023-2024. More information on p. 28.

### i Website

[www.lastpost.be](http://www.lastpost.be)  
[www.cwgc.org](http://www.cwgc.org)

## INDIAN FORCES MEMORIAL

This memorial behind the Menin Gate is dedicated to the 130,000 soldiers of the Indian Forces who served in Flanders during the Great War. 9,000 members of the Indian Expeditionary Force died in France and Flanders, not only due to the nature of their injuries in battle but also due to the severe winter weather conditions they were exposed to.



© Nick Mol

## NEW IRISH FARM CEMETERY



The New Irish Farm Cemetery opened at the start of the Third Battle of Ypres (Passchendaele). It was named after a nearby farm. During the final German advance from April to May 1918, new graves were added. At the time of the Armistice, it contained 73 graves but was then greatly enlarged with more than 4,500 new graves.

### i Address

Briekestraat, Ieper



© Jan D'Hondt

## RAMPARTS CEMETERY



English, Irish, Scottish and Welsh soldiers along with Canadian, New Zealand and Australian soldiers are buried here. Also in this beautiful cemetery are ten Maoris, a working party of the New Zealand Maori (Pioneer) Battalion who were shelled near Ypres on 31 December 1917.

### i Address

Lille Gate, Ypres



© Jan D'Hondt

## HILL 60 & CATERPILLAR CRATER

Hill 60 was captured by the 11th Battalion West Yorkshire Regiment on 7 June 1917 during the Battle of Messines, when two huge mines were blown: one on the hill itself, with a charge of more than 53,000 lbs, was blown by the 1st Australian Tunnelling Company, whose memorial is on Hill 60. They also blew the neighbouring Caterpillar Crater (width 80m, depth 15m).

### Address

Zwartheleenstraat, Zillebeke

### Opening hours

from dusk to dawn

### Entrance

free access



© Westtoer

## ARTILLERY WOOD CEMETERY - GRAVES OF POETS HEDD WYN & FRANCIS LEDWIGE

There are many Welsh burials on this cemetery, including that of the famous poet Hedd Wyn. The Irish poet Francis Ledwige is also buried here.

### Address

Poezelstraat, Boezinge

## ST. GEORGE'S MEMORIAL CHURCH

This Anglican Church was built to commemorate the dead, to serve as a meeting place for visiting relatives, and to keep alive the memory of the sacrifices made in Ypres and the Ypres Salient.

### Website

[www.stgeorgememorialchurchypres.com](http://www.stgeorgememorialchurchypres.com)

## ESSEX FARM CEMETERY SITE JOHN MCCRAE

A total of 1,185 soldiers are buried at Essex Farm, including one of the youngest casualties of the war: Valentine Joe Strudwick was just 15 years old when he was killed. Next to the cemetery, you can still see the concrete bunkers in which a dressing station was housed. It was in one of these primitive 'dug-outs' that the Canadian military doctor Major John McCrae wrote his world-famous poem 'In Flanders Fields' at the beginning of May 1915.

### Address

Diksmuideseweg, Ypres



## SAINT CHARLES DE POTYZE

The largest French military cemetery in Belgium contains 4,200 graves, including 69 Islamic tombs. A Breton Pieta by the Sculptor J. Fréour is located at the front of the site, mourning over the lost dead.

### Address

Zonnebeekseweg, Ypres



## WELSH NATIONAL MEMORIAL PARK Langemark



The red dragon, built on a dolmen (in Welsh "cromlech"), stands in the middle of an area that was conquered by Welsh troops on 31 July 1917. It looks in the direction of Passchendaele, the village that would only be taken three months later at the expense of half a million lives. The surrounding park is dedicated to all Welsh people involved in the Great War, both soldiers and civilians.

### Address

Boezingestraat 158  
Langemark-Poelkapelle

## THE BROODING SOLDIER, SINT-JULIAAN Langemark

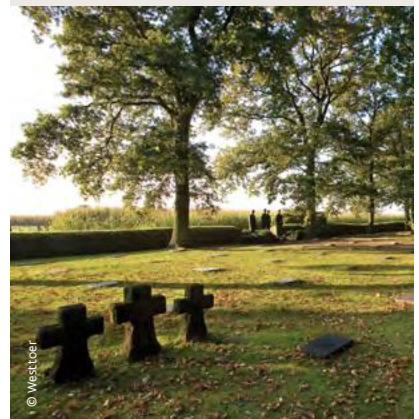


The Brooding Soldier is a 33ft (10m) high granite monument. It represents a grieving Canadian soldier, in memory of the 2,000 soldiers who died in 1915, as a result of a gas attack in the Second Battle of Ypres.

### Address

Brugseweg 123  
Langemark-Poelkapelle

## GERMAN MILITARY CEMETERY Langemark



Behind its monumental entrance building lie some 44,300 German soldiers, half of whom are buried in a mass grave. Over 3,000 cadets and student volunteers are among the dead, which is why the cemetery is also called the Studentenfriedhof.

### Address

Klerkenstraat 86  
Poelkapelle



### BEDFORD HOUSE CEMETERY



This cemetery, just outside Ypres, is one of the largest British cemeteries in the Westhoek. Amongst others, it holds 20 Indian graves. Bedford House Cemetery stands in what was once the park of Rosendael Castle, which the British troops renamed 'Bedford House' during WWI. The castle served as a headquarters and as a medical aid post. Several small cemeteries were started in the castle grounds. The magnificent garden architecture makes Bedford House Cemetery a unique WWI site.

#### **i** Address

Rijselseweg, Ypres



### HILL 62

An impressive memorial to commemorate the Canadian forces who served in the Ypres Salient. "Maple Avenue" – the road that now leads to this memorial – once formed part of the Canadian front line. After the war, the avenue was planted with maple trees as a mark of respect for the Canadian sacrifice. The memorial stands on top of the hill, surrounded by a park. It was the scene of fierce fighting in June 1916, but now offers peaceful views of the spires of Ypres.



#### **i** Address

Canadalaan  
Zillebeke

### HOOGE CRATER MUSEUM Zillebeke



The Hoge Crater Museum owes its name to a pair of historical events that took place during the Great War. Until the start of WWI, the 't Hooze castle stood on top of the 't Hooze hill in Zillebeke. During the war, the castle that served as the British HQ, was totally destroyed. In 1915, the British blew up a number of tunnels, which created a large crater to the north of the castle. During the 1920s, a chapel was built nearby in memory of those killed in WWI. Following renovation works, it was sold to a private individual who amassed a valuable collection of weapons, uniforms and equipment from the four different armies that took part in WWI. Among the most striking items on display are the life-sized tableaux that show what daily life during the war was like. Today, in the former local schoolhouse, there is a themed café where you can admire a collection of decorated shell casings (trench art).

#### **i** Address

Hoge Crater Museum  
Meenseweg 467,  
Zillebeke 8902

#### **Contact**

32 (0)57 46 84 46

#### **Website**

[www.hoogecrater.com](http://www.hoogecrater.com)

#### **Opening hours**

Tuesday-Saturday 10 am-6 pm  
Sunday 10 am-9 pm





### YORKSHIRE TRENCH

Just behind Entry Point North, authentic restored trenches can be found. In the first days of the Third Battle of Ypres, the 38th Welsh Division played a large part in the sector.

#### **i Address**

Bargiestraat  
Ypres

### WELSH CEMETERY (CAESAR'S NOSE)



Up to the Third Battle of Ypres the cemetery lay in no man's land between the two lines. As there were no troops here, it was less shelled which made it ideal for a cemetery once the battle had passed over it. The site is also known as Caesar's Nose as there was a curly shape in the German frontline. The 38th (Welsh) Division buried 23 soldiers here. It was used until the following November. The cemetery contains 68 First World War burials.

#### **i Address**

Moortelweg  
Boezinge



### GUYNEMER PAVILION



The Guynemer Pavilion provides a unique and fascinating opportunity to discover the war in the air during the First World War. There is a special focus on the extraordinary life of the outstanding French pilot Georges Guynemer, who was involved in more than 600 aerial combats, survived being shot down seven times, and achieved 53 victories. On Monday 11 September 1917, sadly, he crashed between the British and German lines,

### ENTRY POINTS YPRES SALIENT

From October 1914 to October 1918, the battlefield of the First World War was located a mile or two from the centre of Ypres. The trenches described a curve from north to south around Ypres. No fewer than fifty bloody battles were fought in the notorious Ypres Salient. Three Entry Points along the Ypres Salient inform you about the events along the Ypres Salient. Today's landscape is shown as a witness of the past through a historical film, three walking routes, a digital application, and a cycling route that connects the three points. At Entry Point **North** a number of portraits of war poets are presented as the Canadian doctor John McCrae and Irishman Francis Ledwidge.

In the **east** the Entry Point is located at Hoge Crater Museum along the Menin Road opposite Hoge Crater Cemetery. This Entry Point illustrates the creation of the front in the centre of the Salient near Bellewaerde Ridge. Besides the historical film the emphasis here is on the beautiful Castle parks that studded the landscape around Ypres before the destructive war. The **south** has two remarkable sites at the Entry Point. The Entry Point itself

near the Poelkapelle cemetery. The exhibition also looks more generally at aviation during the First World War and its considerable significance. Text and images will expertly tell the story, from the use of aviation for reconnaissance to its use for bombing enemy positions. The Pavilion's showpiece will be a replica of the Morane-Saulnier Type L (Parasol).

#### **i Address**

Brugseweg 126  
Poelkapelle

#### **Opening hours**

Wed to Sat 10 am - 6.30 pm  
Limited Sundays (check website)

#### **e-mail**

[info@guynemerpaviljoen.be](mailto:info@guynemerpaviljoen.be)

#### **Website**

[www.guynemerpaviljoen.be/en](http://www.guynemerpaviljoen.be/en)

is located in the provincial domain De Palingbeek at the historical site The Bluff. There you can start your explorations on a recently installed walking path/ platform through the former No man's land, along various craters. The historical film shows how the underground war built up in the southern Ypres Salient where numerous mines exploded. Along the extensive walking circuit, you will reach the second site, Hill 60. You will have stunning panoramic views of the centre of Ypres there and reach the large Caterpillar Crater.

#### **i Address**

Entry Point East:  
Hoge Crater museum view p. 14

Entry Point North:  
Kleine Poezelstraat, 8904 Boezinge

Entry Point South:  
Palingbeekstraat, 8902 Zillebeke

#### **Opening hours**

Entry Point North:  
1 April - 15 November: 10 am - 5.45 pm  
16 November - 31 March: 10 am - 4.45 pm  
Entry Point East and South:  
from dusk till dawn



# PASSCHENDAELE/ ZONNEBEKE

Memorial Museum Passchendaele 1917



Discover and experience the story of the First World War and the Battle of Passchendaele in the interactive design of the Passchendaele Museum. Descend into the dugout (underground shelter) and explore the reconstructed British

and German trenches. Lisa, Louis and the museum rat Maurice will take the youngest visitors on a discovery tour with a folding map and audio play.

## **i** Address

Memorial Museum  
Passchendaele 1917  
Berten Pilstraat 5/A  
8980 Zonnebeke

## **Contact**

+32 (0)51 77 04 41  
[toerisme@zonnebeke.be](mailto:toerisme@zonnebeke.be)

## **i** Website

[www.passchendaele.be](http://www.passchendaele.be)

## **Opening hours**

Daily: 10 am – 5.30 pm  
(Last entry 4:30 pm)  
16 December - 31 January Closed

## **i** Price

Check website  
Groups must book in advance



## **TYNE COT CEMETERY AND VISITOR CENTRE**



This is the largest Commonwealth War Graves Commission military cemetery in the world, with almost 12,000 tombstones. The rear wall of the graveyard is inscribed with the names of 34,957 missing soldiers who fell in the Battle of Passchendaele and later.

## **i** Address

Vijfwegestraat  
Zonnebeke





## POLYGON WOOD



Polygon Wood is a large wood 1 mile (1,6 km) south of the village of Zonnebeke, which was completely devastated in the First World War. The wood was cleared by Commonwealth troops at the end of October 1914, given up on 3 May 1915, taken again at the end of September 1917 by Australian troops, evacuated in the Battles of the Lys, and finally retaken by the 9th (Scottish) Division on 28 September 1918. Here you will find a burial ground named Buttes New

British Cemetery with the New Zealand Memorial, which commemorates 383 officers and men of the New Zealand Division. On top of the 'butte' (hill) you will find the Memorial of the 5th Australian Division. In Polygon Wood you can still see the remains of several shelters. Each year on ANZAC Day (25 April), the efforts of the ANZAC soldiers are commemorated during the dawn service.

### **i** Address

Lange dreve, Zonnebeke



## NEW ZEALAND MEMORIAL AT 'S GRAVENTAFEL

This memorial commemorates the New Zealand Division's participation in the Battle of Broodseinde on 4 October 1917. This attack by ANZAC forces successfully pushed forward the allied trench line in the early part of the Passchendaele offensive but was followed by the inadequately prepared attack of 12 October 1917.

### **i** Address

's Graventafelstraat  
Zonnebeke

## CREST FARM CANADIAN MEMORIAL & CANADA GATE



This marks the place where the Canadian Corps saw fierce fighting during the Second Battle of Passchendaele and won possession of the high ground at Crest Farm.

Canada Gate is the second of two so-called "portals of remembrance." The first monument, installed last year on the Halifax waterfront in Canada, marks the departure from Pier 2 of 350,000 soldiers who boarded ships bound for the battlefields of Belgium and France. Canada Gate marks the arrival site of many Canadian soldiers.

### **i** Address

Canadalaan 37  
Zonnebeke

## BROTHERS IN ARMS MEMORIAL



A memorial in honour of two Australian brothers. John had been buried by his younger brother Jim. John's grave was found in Zonnebeke in 2006 and seemed that he was buried with great care. Johan Vandewalle, the amateur archeologist that excavated the grave, was so touched by the story that he decided to raise up a memorial for the Hunter Brothers which he called "Brothers in arms".

### **i** Address

Lotegatstraat 26  
8980 Zonnebeke

### Website

[www.brothersinarmsmemorial.info](http://www.brothersinarmsmemorial.info)

## 85TH CANADIAN MEMORIAL



This monument was the first one to be erected in the region. It honours the memory of the 85th Canadian infantry (Nova Scotia) Battalion which suffered heavy losses during the Third Battle of Ypres at the end of October 1917.

### **i** Address

Passendalestraat  
Zonnebeke



### PASSCHENDAELE NEW BRITISH CEMETERY



The cemetery was created after the Armistice when graves were brought in from the battlefields of Passchendaele and Langemark. The structure of the front of this cemetery is somewhat unusual, with almost a barred window appearance such as a prison might have. Almost all the graves date from the autumn of 1917, and thus from the Third Battle of Ypres. There are 2,101 burials here, 1,600 of which (more than three-quarters) are unidentified.

#### **i** Address

's Graventafelstraat  
Zonnebeke

### BLACK WATCH MEMORIAL



This statue of a Black Watch soldier, unveiled in May 2014, at the south-west edge of the Polygon Wood, is located at almost exactly the same place that made history as the "Black Watch Corner" on 10/11 November 1914 when a German advance was halted. It constitutes a permanent tribute to the steadfastness of the legendary Black Watch Regiment and honours nearly 9,000 officers and soldiers killed and more than 20,000 injured during WWI.

#### **i** Address

Oude Kortrijkstraat  
Zonnebeke

### PASSCHENDAELE MEMORIAL PARK

The historic grounds of the Zonnebeke villa are the ideal departure point for an exploratory route through the battlefields of 1917. The well-known Polygon Wood and Tyne Cot Cemetery, the largest Commonwealth cemetery in the world, are located less than two miles/three kilometres away. You can relax completely in the grounds, stroll by the lake, or take a moment to stop and think about the history of WWI in the 'Poppy Gardens', themed gardens dedicated to the nations that fought in the Battle of Passchendaele.

### SCOTTISH MEMORIAL FREZENBERG

This memorial is the only one on the former Western Front dedicated to all Scots and all those of Scottish descent who fought in France and Flanders during WWI. It is now the main site of remembrance activities for all Scots. This memorial also remembers those men of the South African Brigade who, throughout the war, fought with the Scots as part of the 9th (Scottish) Division.

#### **i** Address

Ieperstraat  
Zonnebeke

### PASSCHENDAELE CHURCH

Passchendaele Church was totally destroyed by shellfire in 1917. However, it has since been reconstructed and now dominates the village square. Within the church are memorial windows in honour of the 66th Division of the British Expeditionary Force.

#### **i** Address

Passendaleplaats  
Zonnebeke



# MESSINES



## ISLAND OF IRELAND PEACE PARK

The Peace Park with its traditional Irish round tower pays tribute to all soldiers from the island of Ireland who fell during the war, regardless of their background. The nine talking stones tell their tale through poetry, prayer and diaries, while the Peace Pledge calls on Nationalists and Loyalists to forgive each other. Registers in the base of the tower list those commemorated. The park was officially opened on 11 November 1998 by Queen Elizabeth II and the Irish President Mary McAleese.

### **i** Address

Armentierssteenweg

## MESSINES RIDGE BRITISH CEMETERY & MEMORIAL



In total, 1,503 soldiers are buried here: 985 British, 322 Australian, 115 New Zealand, and 56 South African soldiers. Only 549 bodies could be identified. In this cemetery you will also find a Memorial to the Missing, that commemorates over 840 New Zealand Expeditionary Force soldiers who were killed in Messines in 1917–1918 and who have no known grave.

### **i** Address

Nieuwkerkestraat

## MEMORIALS TO THE 16TH IRISH DIVISION AND TO THE 36TH ULSTER DIVISION

These memorials in the form of two stones, are set one of each side of the road. They are located roughly where the two Divisions joined in their successful attack to take Wytschaete.

### **i** Address

Armentierssteenweg

## TOURIST INFORMATION POINT

The exhibition in the visitor centre situated in the former town hall gives you a detailed overview of what happened during the First World War in Messines.

### **i** Address

Markt 22, Messines

### E-mail

[toerisme@mesen.be](mailto:toerisme@mesen.be)

### Opening hours:

Daily 8.30 am - 5.30 pm

Guided tours for groups (min 15 persons) can also be arranged out of office hours. Please contact the tourist office.

### Prices

Free access

### Website

[www.mesen.be/website-en/](http://www.mesen.be/website-en/)

## THE PEACE CARILLON

The carillon in the Saint Nicolas church tower has 59 bells. The first bell of peace (weighing more than 280 pounds) was inaugurated on 17th May 1985 in Ypres by Pope John Paul II. The carillon can be heard every 15 minutes, ringing out hymns from the nations that took part in World War I.

## THE NEW ZEALAND SOLDIER

The statue in the centre of town, is a memorial to all soldiers of the New Zealand Division that fought in the battle of Messines Riddge.

# HEUVELLAND/ WIJTSCHATE

## Sites / Heuveland / Wijtschate



### BAYERNWALD



The once impregnable German trenches on the Kemmel Hill played an important role in the Battle of Messines. The French named the area Bayernwald.

#### **i** Address

Voormezelestraat, Wijtschate



### THE POOL OF PEACE

The Pool of Peace (Spanbroekmolenkrater) was the largest of the mines that were blown up at the start of the assault on Messines Ridge. Before it was blown, the mine was 88 feet (27m) deep and contained 91,000 lbs of ammonal. Once it was blown up, the crater was 250 feet (75m) wide (with a 90 feet (27m) wide rim) and 40 feet (12m) deep.

#### **i** Address

Kruisstraat, Wijtschate

### HEUVELLAND VISITOR CENTRE

This newly refurbished, family friendly visitor centre houses a permanent WW1 exhibition with a particular focus on the centenary of 'the Battle of Messines' or the 'Battle of the Mines' as it is also known, looking at the impacts on the landscape and the archaeology of the area.

#### **i** Address

Sint-Laurentiusplein 1  
8950 Heuveland

#### **Contact**

[toerisme@heuveland.be](mailto:toerisme@heuveland.be)

#### **Website**

[www.tourismheuveland.be](http://www.tourismheuveland.be)

#### **Opening hours**

1 April to 15 November  
Mon - Sat 9.30 am - 12 pm / 1 pm - 5 pm  
Sundays and Public Holidays  
10 am - 4 pm  
16 November - 31 March  
Mon-Sat  
9.30 am - 12 pm / 1 pm - 4 pm  
Closed Sundays and Public Holidays  
except Easter



## GRAVE OF MAJOR WILLIAM REDMOND MP

Considering his age, Irish nationalist politician, Major William Redmond MP, wasn't even supposed to be on the battlefield during the Battle of Messines. After he was shot twice, he was carried off the battlefield by John Meeke, a Loyalist soldier. They reached the Casualty Clearing Station at the Catholic Hospice at Loker where Redmond died of his wounds. He was buried in the grounds of the Catholic convent at Loker and, at the request of his widow, his body remained there. The site is now maintained by the Commonwealth War Graves Commission.

### i Address

Godschalkstraat, Heuvelland



## SPANBROEKMOLEN BRITISH CEMETERY



The cemetery comprising of 58 burials was almost exclusively used for burying some of those who fell on the first day of the Battle of Messines, 7 June, 1917 (three graves are from 8 June). All except one grave are men of the 36th Ulster Division (the Royal Irish Rifles and the Royal Inniskilling Fusiliers). This cemetery was actually lost in later fighting, and only rediscovered after the Armistice.

### i Address

Wijtschatestraat, Heuvelland

## WYTSCHAETE MILITARY CEMETERY COMMONWEALTH



A post-war concentration cemetery where over two thirds of the 1002 buried or commemorated are unidentified. There are three sets of special memorial stones set behind the Stone of Remembrance to the right of the cemetery, commemorating soldiers originally buried in other cemeteries but whose graves were destroyed.

### i Address

Wijtschatestraat, Heuvelland

## AMERICAN MONUMENT

Kemmel

A heavy rectangular block on a wide rectangular platform honours the 27th and 30th American divisions. The monument was built in 1929 by the American Battle Monuments Commission and was created after a design made by George Howe from Philadelphia.

### i Address

Vierstraat, Mount Kemmel

## KEMMEL HILL FRENCH OSSUARY

Kemmel

The ossuary contains 5,294 bodies of fallen soldiers, of which only 57 have been identified. Most of these French soldiers were killed on the hill during the second battle for Kemmel Hill. A column stands at the centre of the cemetery and is topped with the traditional French mascot, a cockerel.

### i Address

Kleine Kemmelbergweg, Heuvelland

## LONE TREE CEMETERY



The cemetery contains 88 graves (six of which are of unknown individuals). Nearly all the graves are those of soldiers of the Royal Irish Rifles who fell on 7 June, the first day of the Battle of Messines. Some of them were actually killed by the explosion of the Spanbroekmolen mine (which was blown around 15 seconds later than planned) as they advanced.

### i Address

Kruisstraat, Heuvelland



# Poperinge



## LIJSSENTHOEK MILITARY CEMETERY & VISITOR CENTRE



From 1915 to 1920 the hamlet of Lijssenthoek (Boescheepseweg) was the site of the largest evacuation hospital along the Ypres Salient and is now the largest hospital cemetery in the world. Today, Lijssenthoek Military Cemetery bears witness to more than four years of warfare, with the graves of 10,784 soldiers mainly Commonwealth but also some

French and German soldiers too. It also holds the grave of the only woman to be buried in a CWGC cemetery in Belgium, the British nurse, Nellie Spindler. The Visitor Centre, situated next to the cemetery, offers information on this unique site, including details about daily life in the hospital and the creation of the cemetery.

### **i** Address

Lijssenthoek Cemetery  
Visitor Centre  
Boescheepseweg 35A  
8970 Poperinge

### Contact

+32 (0)57 34 66 76  
[toerisme@poperinge.be](mailto:toerisme@poperinge.be)

### Website

[www.lijsenthoek.be](http://www.lijsenthoek.be)

### Opening hours

Open all year  
Daily: 9 am - 6 pm

### Price

Free access  
Tour guides  
Book a guide at the Tourist Office  
Fully accessible to visitors with disabilities



## TALBOT HOUSE: EVERY MAN'S CLUB



The most well-known soldiers' club of the Great War is still a home from home in Flanders Fields. It boasts a fabulous garden, authentic chapel, concert hall and the old canteen. Enjoy a cup of tea with the wardens in the "Every Man's Club", an authentic experience which can't be missed. To get the full experience, book a room in the guest house and enjoy a full English breakfast. Individual visitors get a digital guide whilst groups can join a story teller on tour. A new permanent exhibition was opened in 2022, complemented by a new temporarily exhibition in 2023 on the pilgrimages and landscapes.

### **i** Address

Talbot House  
Gasthuisstraat 43  
8970 Poperinge

### **Contact**

Tel +32 (0)57 33 32 28  
[info@talbothouse.be](mailto:info@talbothouse.be)

### **Website**

[www.talbothouse.be](http://www.talbothouse.be)

### **Opening hours**

Monday-Sunday  
10 am - 5:30 pm  
Opening hours groups flexible

### **Price**

Adults: €10.00  
Children: €6.00  
Groups: €8.00  
Schools: €5.50  
Teachers & guides: free  
Trade: free  
Tour guides: € 40.00  
Free introductory movie provided upon request.

## EXECUTION SITE/ DEATH CELLS



During the Great War the courtyard of Poperinge Town Hall was used as an execution site. Several British soldiers faced the firing squad here. Today, this is a symbolic site for reflection and remembrance. Visitors to the death cells are confronted with a video image of a soldier waiting to be shot at dawn and can read graffiti left by prisoners.

### **i** Address

Tourism Poperinge  
Grote Markt 1  
8970 Poperinge

### **Contact**

+32 (0)57 34 66 76  
[toerisme@poperinge.be](mailto:toerisme@poperinge.be)

### **Website**

[www.toerismepoperinge.be](http://www.toerismepoperinge.be)

### **Opening hours**

Daily 6 am - 8 pm

### **Price**

Free access  
Tour guides: Book a guide at the tourist office

## NINE ELMS BRITISH CEMETERY IN POPERINGE



The cemetery contains 1,556 Commonwealth burials and 37 German war graves. There are also 24 Second World War burials in the cemetery, all dating from the Allied retreat to Dunkirk in 1940. Among the 270 New Zealanders buried here is Dave Gallaher. He was a New Zealand rugby union player and was the captain of the original All Blacks. He was killed during the Passchendaele offensive on 4 October 1917.

### **i** Address

Helleketelweg, Poperinge



# Diksmuide & surroundings

## MUSEUM ON THE YSER (YSER TOWER)



The museum focuses on the Belgian-German military confrontation during WWI as well as on Flemish emancipation. It emphasises the message of peace with the slogan: 'What remains of our lives? What remains of the country?'

From the panorama hall on the rooftop terrace, 273 ft (83m) above Flanders Fields, you have a unique view over the entire area from Nieuwpoort at the coast to Ypres and Ploegsteert.

### **i** Address

Ijzerdijk 49  
8600 Diksmuide

### **Contact**

+32 (0)51 50 02 86  
[info@aandeijzer.be](mailto:info@aandeijzer.be)

### **Website**

[www.aandeijzer.be](http://www.aandeijzer.be)

### **i** Opening hours

1 April - 30 September  
9 am - 6 pm (last entry 5.30 pm)  
1 October - 31 March  
9 am - 5 pm (last entry 4.30 pm)  
Weekends and Public Holidays open from 10 am  
Closed: 24, 25, 26 & 31 December;  
1 & 2 January; three weeks after the Christmas holiday

### **i** Price

Adults: €8.00  
Ages 7-17: €4.00  
under 7: free  
Guides for individuals €60.00/2 hours  
Groups (min. 20, guided tour included)  
Adults: €9.00  
Ages 7-17: €4.00  
under 7: free





## TRENCH OF DEATH



This is the only remaining Belgian trench of the First World War. The adjoining interpretation centre with interactive applications, life-size pictures, a collection of film footage, and over a hundred original objects allow visitors to discover the story of the infamous Trench of Death. A German bunker in the immediate vicinity of the Belgian trench is also included in the tour, allowing both sides of the story to be told.

### **i** Address

IJzerdijk 65  
8600 Diksmuide

### Contact

+32 (0)51 50 53 44  
[infocom@warheritage.be](mailto:infocom@warheritage.be)

### Website

[www.dodengang.be/en](http://www.dodengang.be/en)

### Opening hours

1 April - 15 November: Daily  
10 am - 6 pm (last entrance 5.30 pm)  
16 November - 31 March  
Tuesday & Thursday  
9:30 am - 4 pm (last entry 3:30 pm)  
Closed between 25 December & 3 January

### Price

Adults: €6.00  
6-18 years: €4.00  
Under 6: free  
Groups (min. 15): €4.00 / €3.00 (6-18y)  
Guide (1 h, max. 25): €60.00  
(bookings: [toerisme@stad.diksmuide.be](mailto:toerisme@stad.diksmuide.be))  
Payment only by credit card



## VLADSLO GERMAN MILITARY CEMETERY



Known as Vladslo, in Praetbos forest, this German cemetery is the final resting place of some 25,638 German soldiers. On display at the cemetery is a moving sculpture.

The Grieving Parents was created by Käthe Kollwitz, a major German expressionist artist, out of personal grief and love for her 18-year old son Peter, who was killed in the war.

### **i** Address

Houtlandstraat 3, Diksmuide

**KÄTHE KOLLWITZ MUSEUM** Koekelare

The Grieving Parents by Käthe Kollwitz, at the German Military Cemetery in Vladslo, is a world-famous work of art that symbolises the terrible suffering that war inflicted. More of her work can be seen in the nearby Käthe Kollwitz Tower in Koekelare, which houses seven of her graphic works. Her art is characterised by a deep compassion for all victims of poverty, exploitation and oppression. Her pacifism and abhorrence of war can be clearly felt throughout her works. A museum guide is available.

**i Address**

Käthe Kollwitz Tower  
Sint-Maartensplein 15,  
Koekelare 8680

**Contact**

+ 32 (0)51 61 04 94

**Website**

[www.koekelare.be](http://www.koekelare.be)

**BELGIAN MILITARY CEMETERY**  
Houthulst

The most well-known Belgian war cemetery, with 1,855 graves arranged in the form of a six-point star. The victims fell mainly during the liberation offensive of 1918. It is located in the heart of Houthulst forest and also holds 81 Italian soldiers.

**i Address**

Poelkapellestraat 44, 8650 Houthulst

**LANGE MAX MUSEUM**  
Koekelare

The Lange Max Museum is situated on the German side of the Western Front, with a farmyard at the heart. A long lane takes you from the farmyard to the remains of the artillery platform of former German cannon "Lange Max".

This museum tells the story of one of the largest cannons of its time, which was designed to bombard Dunkirk. The museum focuses on the German occupation of Koekelare with a unique exhibition on the organisation behind the front line and the

production of army goods. It also features the little Bakehouse, which still shows signs of German presence, and has now been converted into a multimedia room.

**i Address**

Clevenstraat 2, 8680 Koekelare

**Website**

[www.langemaxmuseum.be](http://www.langemaxmuseum.be)

**Opening hours**

July and August daily 2 pm-6 pm

**THREE CANALS  
(DRIE GRACHTEN)**

In 1914 and 1915, this bridge was an important outpost for the Belgian and later French troops. A memorial plaque on the wall commemorates the French Zouaves. In November 1914, French Zouaves attacked strong German positions. The Germans launched their advance by making captured Zouaves walk ahead of them into 'no man's land'. Suddenly one of the Zouaves cried out, 'Shoot us, for God's sake: it's the Germans!' The attack failed. De Boot, an ecological canal boat, is moored at the Three Canals.

**i Address**

Three Canals  
Drie Grachtensteenweg  
8650 Merkem

**Opening hours**

From dusk to dawn

**Entrance**

Free access

Other months: Wed - Sun 2 pm- 6 pm  
Contact for Group Bookings outside of these times.  
Cafe is open from 11 am

**Prices**

Adults: € 6,00  
Groups (+15), children: € 4,00  
Audioguides: € 2,00  
Guide: € 50,00 (max. 20 p.)  
For groups there are no audio guides available





© David Samyn

# Nieuwpoort

## WESTFRONT VISITOR CENTRE NIEUWPOORT



Westfront Nieuwpoort tells the full story of the flooding of the plains, bringing the German invasion to a halt at the outskirts of the city. It is the story of the power of the sea and the smart handling of the water locks. The perfect place to tell the story of the flooding is the King Albert I monument on the edge of the lock complex "The Ganzepoot" (Goose Foot).

A modern and interactive visitor centre was built underneath the monument. A highlight of the visit is definitely the projection of the 377ft (115m) long and 49ft (15m) high animated Yser-Panorama painting. Last but not least, do not forget to visit the top of the monument itself and enjoy the panoramic view over the coast and the hinterland.

### **i** Address

Kustweg 2  
8620 Nieuwpoort

### **Contact**

+32 (0)58 23 07 33  
[info@westfrontnieuwpoort.be](mailto:info@westfrontnieuwpoort.be)

### **Website**

[www.westfrontnieuwpoort.be](http://www.westfrontnieuwpoort.be)

### **i** Opening hours

Daily 10 am - 5 pm  
Closed: every Monday  
(except on bank holidays)  
25 December & 1 Januari

### **i** Price

Adults: €7.00  
0-6 years: free  
7 - 25 years: €5.00  
Groups: (min. 20)  
Adults: €5.50  
7-25 year: €3.50  
Schools: €3.00  
Tour guides: €60.00



© David Samyn

# Commonwealth War Graves Commission

## THE CEMETERIES & MEMORIALS

The impressive cemeteries of the Commonwealth War Graves Commission (CWGC) are characterised by long rows of white headstones embedded in the landscape. In the shadow of the Cross of Sacrifice and the Stone of Remembrance, which hold a permanent place on most sites of the CWGC, you will find the individual graves of the men and women of the Commonwealth forces who died in the First and Second World Wars. The various Memorials to the Missing, scattered in the Ypres Salient, bear the names of those 'Known Unto God'.

Funded by six member governments (UK, Australia, New Zealand, Canada, India and South Africa), the CWGC's work began with building, and now maintaining, cemeteries and memorials at over 23,000 locations all over the world. Today, over a century after we first began, our work continues through our staff, supporters and volunteers who preserve our unique cultural, horticultural and architectural heritage and ensure that the stories of those who died are told.

More information about other cemeteries on [www.cwgc.org](http://www.cwgc.org)

## RESTORATION YPRES (MENIN GATE) MEMORIAL in 2023-2024

The restoration of the iconic Menin Gate starts in 2023 for a duration of around 2 years and will restore the memorial to its former glory ready for its centenary in 2027.

The Last Post service is guaranteed to take place daily at 8 pm. A virtual Menin Gate will be visible at the Information Centre to look up the names of the Missing. There will be an exhibition on the ramparts, telling the story of the memorial and restoration.

Scaffolding illustrated by Tom Cole, bringing the history of the Menin Gate to life, will cover the Memorial and the name panels entirely. A pedestrian tunnel will provide access to visitors from and to the city. The coach parking remains at the usual location (Hoornwerk).

MORE FAQs AND ANSWERS are available on [www.cwgc.org](http://www.cwgc.org).



## LAYING A WREATH

When buying a wreath at the Ieper Information Centre you are enabling us to fund new education activities that engage people from all communities with the history of the World Wars. Your donation will help to tell the

inspiring stories of the men and women who died, ensuring they will never be forgotten. The wreaths are carefully and respectfully handmade in the former Ypres Salient from woven fresh willow that grow on the former battlefields.

## CWGC YPRES INFORMATION CENTRE

A short distance away, in the shadows of the iconic CWGC Ypres (Menin Gate) Memorial, you will find the Visitor Information Centre of the Commonwealth War Graves Commission. The centre is the perfect starting point when visiting any of the cemeteries and memorials that commemorate those that fell during World War One. Drop in and the friendly team will help you find out more about the CWGC's local sites, undertake research on the CWGC database or answer questions you may have about our work. You can also pick up a souvenir from the CWGC shop, join our membership scheme, or purchase a commemorative biodegradable wreath, to lay at the grave of your interest.

### i Address

Menenstraat 33, 8900 Ypres

### Opening hours

Check [cwgc.org](http://cwgc.org)





## COMMEMORATIVE AND REDEDICATION SERVICES

The Commonwealth War Graves Commission publishes many commemorative services on their Event Calendar, including burial and rededication services for soldiers found still today (when they are open to the public, as chosen by the relatives of the soldier). The organization also engages with visitors by organizing guided tours during War Graves Week and Heritage Open Days, respectively organised annually in May and in September. Check [www.cwgc.org/visit-us/events](http://www.cwgc.org/visit-us/events) and [www.cwgc.org/](http://www.cwgc.org/)

[our-war-graves-your-history/whats-happening-near-you](#) to learn more.

## WAR GRAVES WEEK

Each year the Commonwealth War Graves Commission organises "War Graves Week", around her Foundation date of 21 May. During this week the CWGC's keeps the memory of the Fallen alive by organising a series of events at CWGC sites around the world, which could range from talks, tours, demonstrations and ceremonies. Go to [www.cwgc.org](http://www.cwgc.org) to learn more about this year's programme.

## CWGC DATABASE

On [www.cwgc.org](http://www.cwgc.org), the Commonwealth War Graves Commission gives you access to her database containing 23.000 cemeteries and memorials worldwide where Commonwealth soldiers from the two world wars are commemorated. It is possible to search by name, location, war and even size. Each cemetery page gives an overview of the cemetery information, history, visitor information and a travel description.

On the same website, the CWGC provides an extensive search tool will allow you to interrogate the database of the more than 1.7 million Commonwealth servicemen and women commemorated at CWGC cemeteries and memorials across the globe. Search fields contain Name, Regiment, Date of Death, Service number, Country of commemoration, Country of service, Age, Rank, Honours and Awards, and many more. The CWGC databases are continuously monitored and updated with most recent findings of information.



## Other interesting sites in Flanders Fields

### FLANDERS FIELDS AMERICAN CEMETERY AND MEMORIAL & VISITOR CENTRE Waregem



The Flanders Field American Cemetery is the only World War I US cemetery in Belgium. It lies on a battlefield where the 91st Division fought during the Ypres-Lys offensive, from 30 October to 11 November 1918. The majority of the 368 fallen soldiers lost their lives during those last days of the war. The Visitor Centre, in the former Superintendent's quarters, opened in spring 1917 and is devoted to the US involvement in Belgium during WWI. The activities of the four US divisions that fought in Belgium are explained, selected stories of soldiers buried in the cemetery are highlighted, and the ways in which we commemorate those soldiers, then and now, are described.

#### **i** Address

Wortegemseweg 117  
8790 Waregem

#### **Website**

[www.abmc.gov/cemeteries-memorials](http://www.abmc.gov/cemeteries-memorials)

#### **Opening hours**

Mon-Sun: 9 am – 5 pm

#### **Price**

Free access

#### **Guides**

Free (advanced booking essential)  
[flanders-field@abmc.gov](mailto:flanders-field@abmc.gov)

### HIPPO.WAR WAREGEM Waregem



The Waregem visitor centre dedicated to World War I opened on 11 November 2017. There are two permanent exhibitions: the first looks at the role of the Americans in World War I and the second at the role of horses in the war. The two themes have strong Waregem connections, as the city is internationally famous for its Flanders Horse Event and the Flanders Field American Cemetery is located in Waregem. Thanks to photographs, film clips and audio files, authentic objects, an interactive quiz, and even a reconstructed horse hospital, you can discover some less well known stories from the Great War. Waregem is situated between Kortrijk and Ghent in West Flanders.

#### **i** Address

Hippodroom (second floor of the grandstand building)  
Holstraat, Waregem

#### **Opening hours**

Wed – Sun: 2 to 6 pm

#### **Price**

Admission is free. There is no need to make reservations. Groups may visit outside of the official opening hours, but this is only possible when escorted by a (paid) Waregem guide. You can book a guide through [hippo.war@waregem.be](mailto:hippo.war@waregem.be)

#### **Contact**

Tourist Office - +32 56 62 12 11  
[Hippo.war@waregem.be](mailto:Hippo.war@waregem.be)  
[www.hippowar.be](http://www.hippowar.be)

### VRIJ VADERLAND (FREE FATHERLAND) Veurne



The Experience Centre in the historic town of Veurne focuses on the last remaining section of Belgium that was not occupied by the Germans, the so-called Belgian Sector. From here, King Albert I succeeded in resisting the German occupying forces. Veurne and the surrounding region were populated by people from all over the country, from other continents as well as by refugees, doctors and nurses. In the Experience Centre visitors can experience the events behind the front line, the daily life in this last unoccupied sector of Belgium. They can also witness a real melting pot of people, a multicultural community before the concept even existed. "Vrij Vaderland" uses an interesting scenography to tell this story, combining modern media with traditional exhibition techniques.

#### **i** Address

Stad- en Landshuis  
Grote Markt 29, 8630 Veurne

#### **Contact**

+32 (0)58 33 55 31  
[www.vrijvaderland.be](http://www.vrijvaderland.be)  
[visit@veurne.be](mailto:visit@veurne.be)

#### **Opening hours**

1 April - 11 November:  
Mon - Fri: 9 am - 5 pm  
Sat - Sun & public holidays:  
10 am - 5 pm  
12 November - 31 March:  
Mon - Fri: 9 am - 5 pm  
Sat - Sun & public holidays:  
1 pm - 5 pm  
25 December & 1 January: closed

#### **Price**

Adults: €4.00  
65+: €3.00  
Children (7-18): €2.00  
Groups (min. 15 persons): €3.00  
Schools: €2.00



# THEME YEAR 2023-2024

## Landscapes. Feel Flanders Fields.

### A WITNESS OF WORLD WAR I

28 April 2023-31 August 2024

Over 100 years ago, the First World War transformed the landscape of Flanders Fields. Hundreds of cemeteries, monuments and other silent witnesses appeared amongst picturesque villages, fields and quiet roads. Today, Westtoer and VISIT**FLANDERS** invite you to discover the landscape as the last witness during the theme year **Landscapes. Feel Flanders Fields**.

During the **Landscapes. Feel Flanders Fields** theme year, you can learn how the landscape was sculpted in the 'For Evermore' Expo in the In Flanders Fields Museum. Meanwhile, the 'Nieuwpoort over Water' spectacle allows you to experience the historic flooding of the River Yzer. Let yourself be amazed by the story of the French fighter pilot Guynemer, or the Art Festival Watou 2023 with its new and contemporary interpretations of the history of war. Alternatively, cycle through undiscovered places full of music in the Music Centre Dranouter cycle festival.

The immersive experience 'Forgotten trail,' an impressive sound and light event, transports you to Poperinge anno '14-'18, while the exhibition 'Witnesses in the landscape' of the Commonwealth War Graves Commission explores the story of 25 well-known and lesser-known cemeteries. Memorial Museum Passchendaele 1917 invites you to visit the surrounding landscape that still serves as a living memory of the Battle of Passchendaele today. **Landscapes. Feel Flanders Fields** also brings invisible traces of the past to the surface through artworks and VR via a number of cycling and walking routes.

With a varied and accessible programme containing not only historic, but also innovative and artistic perspectives, **Landscapes. Feel Flanders Fields** allows the landscape of the Flanders Fields region speak for itself from 28 April 2023 to the end of August 2024. If you are out and about with family or friends, young and old, between history, art and recreation... why not venture into the landscape and experience Flanders Fields for yourself.

[www.discoverflandersfields.be](http://www.discoverflandersfields.be)

Sites



# CALENDAR OF EVENTS

## 2023-2024

29 April 2023 - 18 February 2024

IN FLANDERS FIELDS MUSEUM, YPRES

### **FOR EVERMORE:**

### **First World War cemeteries**

#### *Exhibition*

In this exhibition, In Flanders Fields Museum reveals the stories behind British, French, Belgian, German and American cemeteries. Besides telling the personal histories of those buried here, these stories also impart a great deal of information about the First World War. The Westhoek landscape with its numerous cemeteries stands as one of the last remaining witnesses of the Great War today. The stimulating presentation includes a guided audio tour and a mix of unique objects, personal stories and interactive and multimedia installations. The "For Evermore" exhibition is an ideal starting point to discover the Westhoek's former battlefields. The "For Evermore" podcast offers additional information to guide further on-the-spot explorations of the contemporary memorial landscape.

From spring 2023

IN FLANDERS FIELDS MUSEUM

### **The Salient Illustrated**

#### *Educational tour for school groups*

During the new "The Salient Illustrated" educational tour, the In Flanders Fields Museum educational team will lead your school group through the area's former war landscape and contemporary memorial landscape. To understand the Great War, you namely have to see the landscape where it took place. Drawings by British cartoonist Dave Chisholm help visitors to identify and understand the battlefield landscape. Dave has worked as a cartoonist for The Sunday Times and The Daily Telegraph for 25 years. "The Salient Illustrated" begins with a visit to the museum. After this, your group will attend a workshop at reconstructed farm Klein Zwaanhof's new workshop facilities. Then you take a guided walk through the updated Yorkshire Trench & Dugout site and the battlefield cemeteries Colne Valley Cemetery and Caesar's Nose.

From the end of April 2023  
to the end of 2024

HOOGLEDE GERMAN MILITARY CEMETERY

### **AR DMB Hooglede**

#### *Augmented Reality Experience*

At Hooglede's German Military Cemetery, an innovative experiential augmented reality (AR) presentation tells the cemetery's story and personal stories of German soldiers, residents and witnesses. Visitors use an app to scan QR codes, causing a holographic character to appear. This character, a witness from just after the First World War, provides information about the cemetery itself or guides them to a personal story. At various locations throughout the cemetery, the character uses his experiences to relate historic events in an accessible manner. High-quality historical research ensures his testimony's accuracy.

From the end of April 2023  
to the end of 2024

HOOGE CRATER MUSEUM, ZILLEBEKE

### **The Front Eye**

#### *Viewpoint*

From the end of April 2023 to the end of 2024

The Front Eye is the Hooge Crater Museum's new, unique viewpoint. At this reconstructed Hooge chapel, a very special heritage building, a large rose window acts as a viewpoint. Through the new "eye", visitors can look out at the historic front's Hill 60, Hill 62, Sanctuary Wood Cemetery, Hooge Crater Cemetery, Kemmelberg and Ypres Salient.

This - literally - new perspective inspires plenty of questions. Why were these hills fought over for four years? Why were these small differences in height so important? A panoramic map and explanatory exhibition describe the landscape's all-important role in more detail. The Front Eye acts as a clear link between the museum, its surrounding landscape and Hooge Crater Cemetery.



**From the end of April 2023  
to the end of 2024**

CWGC IEPER INFORMATION CENTRE

## **Witnesses in the Landscape**

*Exhibition*

No two CWGC cemeteries are the same. At the information centre, an immersive drawing and experience installation with a sliding screen relates various stories and bite-sized facts about some 25 of these cemeteries, a mix of well-known sites and hidden gems.

Visitors are encouraged to visit these sites in person and there are printed materials with more detailed information for the individual sites. There are also themed folders aimed at different audiences available for consultation. Each packet includes an associated downloadable audio guide.

**Opening 28 April 2023**

PACIFIC ISLAND

## **Peace Bridge**

*Monument*

A Peace Bridge will adorn the unique fortifications of Ypres, City of Peace. A harmonious combination of art, monument and bridge, it will form a new memorial that inspires reflection.

The Peace Bridge balustrade will be artistically embellished with the word "peace" in 92 languages using laser engraving. The use of the sustainable material steel references the reddish brown of rusted iron and elegant lighting creates an intense play of light. The Peace Bridge will be accessible at all hours, provide a powerful artistic and multilingual focal point in the landscape, strengthen Ypres's peaceful message and make a clear statement of universal tolerance.

**From the end of June 2023 to  
the end of the summer of 2024**

FLANDERS FIELDS REGION

## **Invisible Landscape. A search for vanished WW1 cemeteries.**

*Land Art*

Vanished traces of WWI (mainly cemeteries) are made visible again at one location per municipality. These traces can be Belgian, British, German or French. Some will be re-visualised using land art and can be visited via recreational routes. In this way, we tell the story of the post-war landscape, while at the same time allowing for the development of a landscape arts festival.

**From 29 April 2023 till 31 August 2024**

VLETEREN

## **The landscape bears witness in Vleteren**

*Walk*

Vleteren is re-introducing elements of WWI into the current landscape. Visitors can follow a walking route with viewing boxes (for viewers of various heights) to discover what would have been visible at those exact spots in wartime. Images include a vanished tram stop, the village square back then and the flooded Yser. The route uses paved roads and paths, making it accessible to everyone including buggy and wheelchair users.

Events

FOR MORE INFORMATION:

**[WWW.DISCOVERFLANDERSFIELDS.BE](http://WWW.DISCOVERFLANDERSFIELDS.BE)**



## Opening in November 2023

LO-RENINGE

### **The landscape bears witness**

#### *Quiet zone*

Hoflandstraat in Reninge is the location of a former military cemetery. This cemetery was established in the 1920s as a final resting place for the 347 people who died in the surrounding area. In 1968, the cemetery was cleared and the soldiers were moved to final resting places in Hoogstade and Vleteren. British and Canadian soldiers were taken to Adegem.

In Lo-Reninge, those who were buried here are commemorated, telling their stories on panels, through the Heritage app and QR codes. This location on Hoflandstraat is now a designated quiet zone, a place to grieve and remember the fallen. There will also be a picnic area, set up with respect for the location's history. This spot has been included in hiking and cycling networks.

## 30 April 2023 to the summer of 2024

TALBOT HOUSE

### **The Talbotousians in war & peace**

#### *Exhibition*

During the First World War, Talbot House in Poperinge welcomed over half a million Talbotousians, as founder Tubby Clayton called these loyal visitors. Even after the war, however, human need remained pressing. Tubby Clayton, his pilgrims and their families spent many years visiting the graves of deceased comrades. Together, they also founded global organisation Toc H to support veterans and their families in rebuilding their lives. This new temporary exhibition presents anecdotes of their pilgrimages and tells the stories of more than 10,000 Toc H clubs. Who knows, perhaps you'll discover whether your own grandfather was there... In Tubby's dining room, a haunting documentary acts as rich embellishment to these stories. And when you're ready, we're happy to guide you through the landscape in Tubby's tracks, among cemeteries and craters, with our pilgrimage route for cars.

## 14 May 2023 – 31 August 2024

KOEKELARE

### **HET LINT # DAS BAND # THE RIBBON**

#### *Experiential route*

This area was German occupied territory during WWI; preparations for the front took place here. Koekelare's story is told through the eyes of the landscape of the time and its changes in the present day by means of information panels at some ten vanished and commemorative WWI sites. QR codes offer access to additional photographs and audio content via the Heritage app. The route passes through Koekelare from the German military cemetery at Vadslo to the Lange Max Museum and can be completed at visitors' own pace and using their own transport. Yellow ribbons mark the way. These ribbons refer to the song "Tie a Yellow Ribbon Round the Old Oak Tree" by Dawn, in which the yellow ribbon symbolises the hope that someone will return home after having gone missing for a long time.

## Cycling festivals on 19-20-21 May 2023 and 9-10-11 May 2024. Cycling routes open as from each cycling festival.

DRANOUTER MUSIC CENTRE

### **Modderland**

#### *Musical cycling routes*

By the time the final shot sounded on 11 November 1918, the Westhoek had come to resemble a lunar landscape. Millions of people had experienced the effects of four years of war. In the popular imagination however, WWI is almost exclusively about the men. From heads of state to soldiers, all are men. Attention for the roles of women during the Great War was and is lacking. Modderland uses the Heuvelland landscape's "war scars" as a starting point for artistic expressions by and about women. There will also be themed artistic and musical cycling routes that visit ten WWI Heuvelland sites. During the 2023 and 2024 Ascension weekends, we will invite the musicians behind the songs to take part in a cycling festival. Visitors can then experience performances of these songs as they cycle along.





FOR MORE INFORMATION:

[WWW.DISCOVERFLANDERSFIELDS.BE](http://WWW.DISCOVERFLANDERSFIELDS.BE)

Opening May 2023 until autumn 2024

DIKSMUIDE

### **Museum on the Yser (Yser Tower)**

*Expo*

The Museum on the Yser is opening up its crypt as part of the project "Het Landschap Getuigt" (The Landscape Bears Witness). At this cemetery, visitors can immerse themselves in the history of the Yser pilgrimages and the construction of the first Yser Tower. The museum is reviving this important heritage through audio stories and explanatory texts.

In addition, its panorama hall will be expanded with a new digital installation. The museum is located in the Yser Tower (84-metres/275 feet high), with 22 stories and impressive views from the top floor. The surrounding landscape formed the backdrop for the Battle of the Yser, in which Belgian and French troops faced the Germans head-on. The digital installation will display the evolution from war landscape to memorial landscape, making the traces in the landscape clearly visible once more.

May 2023 – August 2024

DIKSMUIDE

### **Liksems**

*Exhibition*

Historical characters point out scars in the landscape (known as "liksems" in West Flemish). Storytellers will include Charles Fouquierais, French combat artist for the Marine Fuseliers, army doctor Chastang, a Senegalese soldier, Karel Vanlerberghe (combat artist for the Belgian army), Joe English (Flemish combat artist), Achilles Van Sassenbrouck and photographer Brusselle. Others such as Käthe and Peter Kollwitz tell their own "German Hinterland" landscape story as well.

From May 2023

DIKSMUIDE

### **Liksems**

*Cycling, hiking and sailing routes*

The Liksems exhibition's stories serve as a starting point to encourage visitors to set off on Liksems Experience Routes. There will be five continuous experience routes for individuals, as well as guided tours available on specific days or on request.

- Three cycling routes departing from Diksmuide, situated on both sides of the front line
- Two new hiking trails through Kaaskerke and Oostkerke. These two villages changed completely after the war, as they were rebuilt near but not at their original locations.
- One Yser boat tour along the Yser Plain, an area full of monuments and sites that bear witness to the Great War and its impact on the landscape.

Weekend of War Graves Week, May 2023

### **MMP1917 Zonnebeke**

*Theatrical walk*

A theatrical walk created in partnership with the University of Kent tells the story of how descendants relate to the post-war landscape. The route passes monuments, cemeteries and landscape features and is made up of two loops, one around Zonnebeke castle park and a second around Buttes New British Cemetery. Participants set off with a guide and at various stopping points, encounter actors acting out scenes from 1920s Zonnebeke that tell British, German and Belgian stories about the history of the war, the reconstruction and the new front tourism.

## Five evocations from May 2023 to November 2023

LAST POST ASSOCIATION

### **Last Post in the landscape**

*Event at various locations*

As happened in 2001 (25,000th Last Post) and 2015 (30,000th Last Post), the Last Post Association will collect various stories and then read these out under the Menin Gate during the day's Last Post ceremony. The new stories will be added to the existing Last Post App, which already contains 365 stories. They will be linked to the landscape as closely as possible (indicating where a soldier fought, was wounded, cared for, died or buried), so that visitors can use a map to trace their journey through the landscape.

These stories form the backbone of a series of four evocations between May and November 2023, during which the Last Post Association will leave the Menin Gate and actively enter the landscape together with visitors. The evocations each focus on one or more stories and let music and words speak in unique landscape locations.

27 May 2022

### **UP4RUNNING**

*Belgian Front Memorial Trail*

The Belgian Front Memorial Trail is an annually recurring running event for participants of greater and lesser experience, with options up to 100 km. The run starts just before dawn at the French border and ends after sunset on Nieuwpoort beach.

Runners spend an entire year in preparation, definitely physically, but even more so mentally. Their route takes them on a pilgrimage past WWI monuments, museums and cemeteries. Thanks to a collaboration with local cultural-historical partners, runners may experience this theme in more depth. Each participant also contributes to ALS disease research.

8 and 9 July 2023

LANGEMARK-POELKAPPELLE

### **100 Years of Guynemer/The Brooding Soldier**

#### **Ceremony at Langemark**

*Event*

The Canadian Memorial in Sint-Juliaan and the Guynemer monument in Poelkapelle were first unveiled on 8 July 1923, attracting many members of the public and dignitaries. The Guynemer monument is the largest monument dedicated to an individual for the French. The Canadian Memorial stands a short distance away, enduringly imposing and poignant. Then and now, both monuments act as beacons in the landscape.

100 years later to the day, Langemark-Poelkapelle will mark the unveiling's centennial together with the Guynemer Committee, VOF Guynemer, Veterans Affairs Canada and KH Sint-Cecilia Langemark. The weekend-long programming will include remembrance ceremonies, concerts with storytelling and aperitifs, projected historic images, a parade of tanks, an aerial tribute, an outdoor exhibition, a lecture, artistic impressions and stories about Yvonne Printemps.

1 July 2023 – 3 September 2023

POPERINGE

### **WATOU Arts festival (Poperinge)**

*Arts Festival*

As part of the Watou 2023 Arts Festival, artists and poets will create new works to fit the theme of landscapes. Around 30 artists will let themselves be inspired during a multi-day event at castle domain De Lovie. There will also be a cycling poetry route along WWI cemeteries near Watou, such as Abele Aerodrome, Lijssenthoek, Dozinghem and Nine Elms.

FOR MORE INFORMATION:

**[WWW.DISCOVERFLANDERSFIELDS.BE](http://WWW.DISCOVERFLANDERSFIELDS.BE)**



1 to 4 November 2023

NIEUWPOORT

## **Nieuwpoort over Water**

*Event*

During the 2023 autumn holidays, Nieuwpoort will organise a multi-day event at the Ganzepoot site, Western Front Visitor Centre and Albert I monument. "Nieuwpoort over Water" is a unique experience based around the Yser Plain, both visually and in terms of content. The event has four layers, presenting visitors with a four-fold experience designed around four different geographic elements and types of content: a large-scale, spectacular total experience for spectators and participants, a prelude for participants, a unique walk on water for participants and a walk along the locks for participants. The entire experience takes two hours.

February 2024 to 31 December 2024

MMP1917 ZONNEBEKE

## **Echoes of War**

*Exhibition*

Memorial Museum Passchendaele 1917 highlights the landscape's role as a depository of memories of the Battle of Passchendaele. The exhibition focuses on three types of landscape elements: military cemeteries and monuments, relics of war and landscape features. Visitors are guided through the history of the remembrance landscape. Various personal possessions and digital story maps illustrate the connections between landscape and memory. An interactive map table shows the various cemeteries, monuments and war relics. And finally, a booth presents local hiking and cycling options, inviting Museum visitors to explore the landscape in person. A new walk is also under development which will tell the stories of nearly 250 military personnel discovered to be buried on Zonnebeke's castle grounds after WWI.

From 30 June 2024

POPERINGE VISITOR CENTRE

## **Forgotten Tracks**

*Immersive experience*

Forgotten Tracks is a new installation that will be located next to the visitor centre at Lijssenthoek Military Cemetery. This immersive experience will be housed in an underground annex and focus on railways in WWI. Visitors enter a dark space with a six-metre-long diorama of a historic station as its focal point. The experience includes images projected onto the walls, ceiling and floor, combined with surround sound audio. Visitors feel what it is to be at a station in wartime: trains arrive and depart, soldiers march towards the front lines, wounded are taken away and bombs fall in the night...

11 August till 22 August 2024

LANGEMARK-POELKAPPELLE

## **Mountains of grief**

*Theatrical walk*

Over a hundred years ago, the Westhoek saw indescribable horrors, which left behind many scars on the landscape. While some of these scars remain visible, after a century, others have faded or vanished altogether. Examples include lost German cemeteries, demolished bunkers and craters that have since been filled. As the landscape heals, their stories disappear and with them, their power to call for peace. These stories are reflections of "Bergen van verdriet", or mountains of grief. The aim is to revitalise the stories by means of a theatrical walk which highlights both a lesser-known side of World War I and the war's impact.

30 & 31 August 2024

DIKSUIDE

## **Liksem**

*Audio-visual spectacle*

Evening spectacle Liksem (West Flemish for scars) is a large-scale event all over Diksmuide that gathers together the many new stories uncovered as part of the landscapes theme year in exhibitions, theatrical walks, hiking and cycling. At the end of August 2024, visitors can experience a multimedia story told at various locations through words and sounds, image and imagination, art and poetry, acts and sketches, projections and soundscapes.



# DISCOVER THE BATTLEFIELDS

## GETTING THERE AND AROUND

### INTERESTING WEBSITES

[www.discoverflandersfields.be](http://www.discoverflandersfields.be)

This website provides all the information needed to discover the Flanders Fields region. It also provides useful information about places to stay in the Westhoek.

[www.flandersfields1418.com](http://www.flandersfields1418.com)

The official website of Visit Flanders, it lists all the places of interest and events related to the Great War that are taking place in Flanders and Brussels.

### TRAVELLING TO FLANDERS FIELDS

#### By train:

It is possible to travel by train to Ypres or Poperinge from every city in Flanders (generally a change of train in Kortrijk is required).

[www.belgiantrain.be/en](http://www.belgiantrain.be/en)

#### By coach:

Half or full day organised coach tours are offered to and in Flanders Fields, incorporating the main sites and the Last Post Ceremony. See page 45.

#### By car:

A comprehensive road network exists around and within Flanders Fields.

#### By bike:

Flanders boasts one of the world's most comprehensive cycling networks, and cycling is a great way to tour Flanders Fields.

[www.flandersbybike.com](http://www.flandersbybike.com)

### VISITING FLANDERS FIELDS

Some of the cemeteries, visitor centres and other sites across Flanders Fields are difficult to reach by public transport. For this reason, if visitors do not have their own transport, we recommend booking an organised tour or renting a bicycle or car.

### CYCLING IN FLANDERS FIELDS

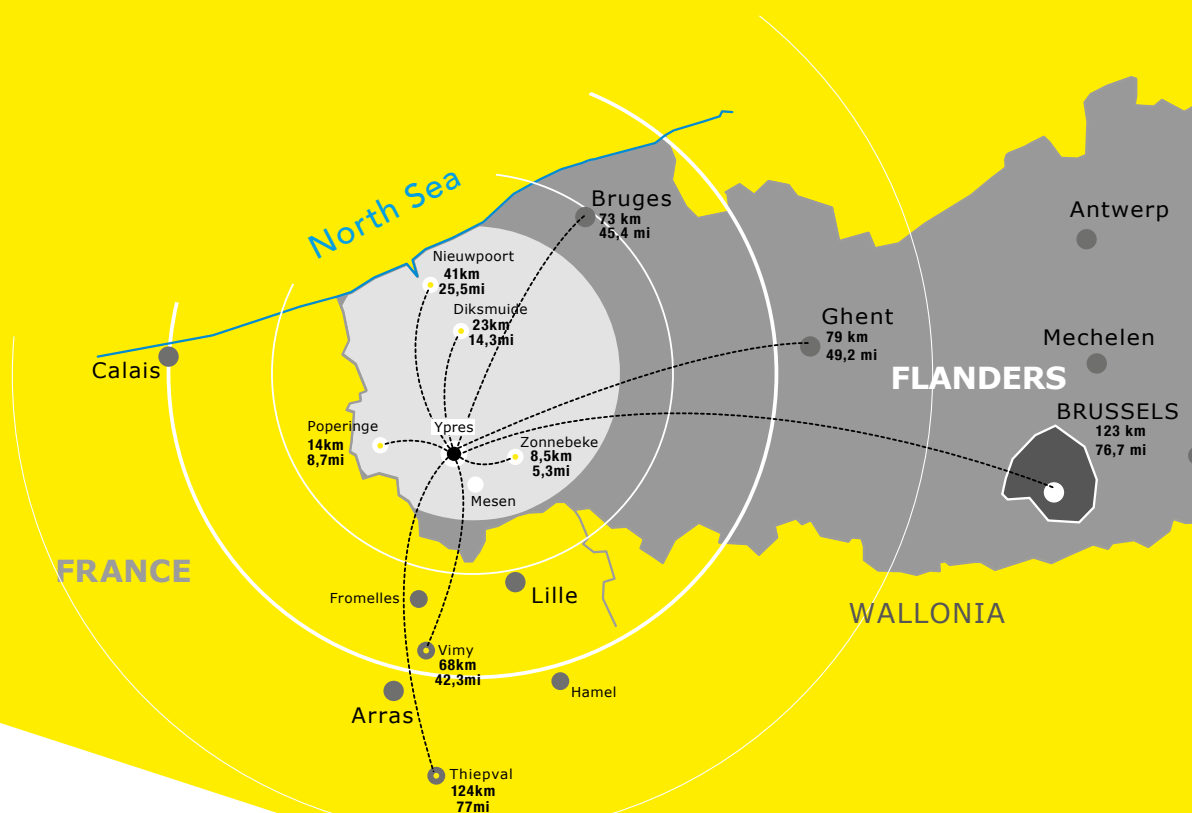
There are a number of themed cycling routes that will take you past WWI heritage sites. These routes and a list of cycle hire companies that operate in Flanders Fields can be found on this site:

[www.discoverflandersfields.be](http://www.discoverflandersfields.be)

### WALKING IN FLANDERS FIELDS

There are also a lot of themed walking routes which you can find on [www.discoverflandersfields.be](http://www.discoverflandersfields.be).

The **Western Front Way** is a new long-distance walking route from the Flemish coast to the French Alps in the south. They are still developing the route but the part in Flanders is already fully marked. The northernmost part of the walking route travels right through Flanders Fields, from Nieuwpoort to Messines or vice versa. The route meanders along the WWI front line and is 85 km long in total. The route is signposted with rectangular signs in two directions.





Depending on how many kilometres you want to walk each day, you can complete the route in 2 to 4 days. Along the way, you can stay overnight in one of the participating accommodations in Ypres or Diksmuide. If necessary, they will also provide luggage delivery service.

A handy walking guide 'the Western Front Way' with route maps shows you the way. The guide zooms in on the route on Westhoek territory and especially goes one step further: it brings the stories to these places. Along the way, you will discover lesser-known war sites, special facts and punishing stories. The walking guide is available (€6) from the tourist offices of Ypres, Diksmuide, Zonnebeke and Nieuwpoort. Various accommodation providers from Ypres & Diksmuide, also provide the necessary luggage delivery service if required.

[www.thewesternfrontway.com](http://www.thewesternfrontway.com)

(information about the route)

[www.discoverflandersfields.be](http://www.discoverflandersfields.be) (information guide, accommodation and luggage delivery)

### VISITING THE WESTHOEK BY CAR

There are many car routes that allow visitors to discover the war landscape and its different landmarks. More information: [www.discoverflandersfields.be](http://www.discoverflandersfields.be)

Cars can be rented from the major international car rental companies which have branches in Brussels, Bruges, Ghent, Ostend and elsewhere in the region, as well as from local companies.

### Coach parking

There is coach parking available at the following locations close to important landmarks:

- ✔ **Ypres:** Long term parking: Goederenstation  
Short term parking for a visit of the Menin Gate or Last Post: Hoornwerk (3 spaces) & Kauwekijnstraat (2 places).  
Only drop off / pick up passengers. Maximum 10 minutes.  
Turn engine off.  
Traffic plan:  
[www.toerismeieper.be/circulatie-bussen-centrum-ieper](http://www.toerismeieper.be/circulatie-bussen-centrum-ieper)
- ✔ **Poperinge:** Peperstraat/Oudstrijdersplein, Sportzone Reningelstseweg - Ouderdomseweg, Zuidlaan (next to the ring road), Westlaan (next to the ring road), Lijssenthoek military cemetery
- ✔ **Zonnebeke:** Museum Passchendaele, Tyne Cot Cemetery
- ✔ **Diksmuide:** Yser Tower, train station
- ✔ **Nieuwpoort:** adjacent to the King Albert I monument

### FLANDERS FIELDS FROM THE AIR AND ON THE WATER

Skyview balloons organise balloon flights over the Great War Frontline: [www.skyviewballoons.be](http://www.skyviewballoons.be)

Helipromotions organise helicopter flights  
[www.battlefields.be](http://www.battlefields.be)

Alfa flight also organises flights: [www.alfaflight.be](http://www.alfaflight.be)

Seastar organizes boat trips  
from Nieuwpoort to Diksmuide.  
[www.seastar.be/en](http://www.seastar.be/en)



## Gastronomy in Flanders Fields

Like all areas of Flanders, the Westhoek offers a large choice of restaurants in every price range. Websites of each town/city provide information about local restaurants.

[www.toerisme-ieper.be](http://www.toerisme-ieper.be)  
[www.toerismepoperinge.be](http://www.toerismepoperinge.be)  
[www.tourism.diksmuide.be](http://www.tourism.diksmuide.be)  
[www.nieuwpoort.be](http://www.nieuwpoort.be)  
[www.heuveland.be](http://www.heuveland.be)

Information about restaurants elsewhere in Flanders is available from [www.visitflanders.com](http://www.visitflanders.com)

# Organised battlefield tours

Several operators offer small-group or private tours taking a standard or customised route in Flanders Fields. It is also possible to visit iconic places in France.

## 2XPLORE FLANDERS FIELDS

Standard or customised tours in the Ypres Salient and other Western Front areas by an experienced guide with a military background for all kinds of groups and individuals.

- i** **Max. number of participants:** Standard 8. Larger groups possible
- Duration of tour:** Half day/full day
- Departure:** Ypres or other place as agreed
- Website:** [www.2xplore.be](http://www.2xplore.be)
- Booking:** [info@2xplore.be](mailto:info@2xplore.be) or +32 475 519828

## QUASIMODO TOURS

Standard tour: Visits to Tyne Cot Cemetery, Passchendaele, Hill 60 preserved battlefield, a German cemetery, bunkers and craters, restored trenches, Hoge Crater Museum, Essex Farm Cemetery and dressing station (John McCrae site), the town of Ypres and the Menin Gate, and various memorials to the British Forces (including ANZAC and Canadian). A visit to a cemetery to pay respect to an ancestors grave can be included on request when booking. Entrance to museum and lunch are included in our tour price. There is an option to stay for the Last Post Ceremony.

- i** **Max. number of participants:** 28
- Duration of tour:** full day
- Departure:** Bruges
- Website:** [www.quasimodo.be](http://www.quasimodo.be)
- Booking:** [info@quasimodo.be](mailto:info@quasimodo.be) or +32 50 370 470

## CAMALOU BATTLEFIELD TOURS

Private guided tours with a licensed tour guide in Flanders Fields, Ypres Salient, Messines Ridge. Also Somme, Vimy and Villers Bretonneux possible.

- i** **Max. number of participants:** 8
- Duration of tour:** full day/several-day tours
- Departure:** Ypres, Lille
- Website:** [www.camalou.com](http://www.camalou.com)
- Booking:** [info@camalou.com](mailto:info@camalou.com) or +32 57 204 342

## BIKING BOX CYCLETOURS

Guided bicycle tours. Possibility of bus transport to departure and from arrival, bicycle rental service (road bicycles, electric bikes, tandems).

- i** **Max. number of participants:** No limit
- Duration of tour:** Half day/full day/several-day cycling holidays
- Departure:** Menenstraat 15, Ypres
- Website:** [www.bikingbox.be](http://www.bikingbox.be)
- Booking:** [info@bikingbox.be](mailto:info@bikingbox.be) or +32 477 59 23 82

## FLANDERS BATTLEFIELD TOURS

Standard Ypres Salient morning & afternoon tours. Bespoke Tours for all nationalities covering Fromelles, Loos, Mons, Neuve Chapelle, the Somme, Ypres Salient & the Belgian Ijzer sector etc...with free research being prepared if following in a relative's footsteps of the First World War.

- i** **Max. number of participants:** 16
- Duration of tour:** 2.5hr-4hr/full day
- Departure:** Ypres
- Website:** [www.ypres-fbt.com](http://www.ypres-fbt.com)
- Booking:** [info@ypres-fbt.com](mailto:info@ypres-fbt.com) or +32 57 36 04 60





### CYCLE THE WESTERN FRONT

Guided bicycle tours along the Western front in Flanders Fields and France (Vimy Ridge, Beaumont-Hamel, Compiègne, Reims, Verdun). Special two week armistice bike ride from Nieuwpoort to Verdun in 2018 view website.

**i** **Max. number of participants:** 15

**Duration of tour:** full day/several-day cycling tours

**Departure:** Ypres, Lille Europe, airport Brussels or Paris

**Website:** [www.cyclingthewesternfront.co.uk](http://www.cyclingthewesternfront.co.uk)

**Booking:** [carl.ooghe@gmail.com](mailto:carl.ooghe@gmail.com) or +32 475 81 06 08

### THE WESTERN FRONT REVISITED

Tailor made tours in minivan with a licensed tour guide in Flanders Fields. Also visit of the Somme, Dieppe, D-day, Bastogne and Waterloo possible.

**i** **Max. number of participants:** 8

**Duration of tour:** full day/several-day tours

**Departure:** Ypres, Lille Europe, airport Brussels or Paris

**Website:** [www.the-western-front-revisited.fr](http://www.the-western-front-revisited.fr)

**Booking:** [carl.ooghe@gmail.com](mailto:carl.ooghe@gmail.com) or +32475810608

### CRUISING ALONG THE FRONTLINE

Follow the footsteps of the front soldiers, with a WWI historian as your private guide, in a luxurious minibus, with a Vespa or on your own motorbike to Ypres, the Somme and Verdun. A unique trip through trenches, past cemeteries, between bunkers and bomb craters. Immerse yourself in the forgotten stories of the Great War and learn to read the traces in the landscape. Book a bespoke trip or teambuilding, to the sites of your choice. Vespa tour? The scooters will be arranged for you.

**i** **Max. number of participants:** No limit

**Duration of tour:** Half day / full day / several-day trips

**Departure:** Ypres or other place as agreed

**Website:** [www.CruisingAlongTheFrontline.be](http://www.CruisingAlongTheFrontline.be)

**Booking:** [info@CruisingAlongTheFrontline.be](mailto:info@CruisingAlongTheFrontline.be) or +32 472 302 970

### YPRES BATTLEFIELD TOURS

A wide range of tours focused on the battlefields around the Ypres Salient and Vimy Ridge in France. Tour in the comfort of an 8 seat minivan with the company of your English guide.

**i** **Max. number of participants:** 8 participants (larger groups on demand)

**Duration of tour:** Half day/full day

**Departure:** Ypres or other place as agreed

**Website:** [www.ypresbattlefieldtours.be](http://www.ypresbattlefieldtours.be)

**Booking:** [ypresbattlefieldtours@gmail.com](mailto:ypresbattlefieldtours@gmail.com) or + 32 472 59 61 77



# Explore WWI outside the classroom

A lot of museums offer special experiences for English speaking primary and secondary school students. Some museums will be offering special programs during the theme year LANDSCAPES. Here are some suggestions for young visitors.

## IN FLANDERS FIELDS MUSEUM

The museum has an extensive educational program for pupils between the ages of 10 and 18. There are educational resources which can be used before, during and after the visit to help students explore the region. (Visit the website for more information).

There will be a special educational tour for secondary schools during the LANDSCAPES theme year (from September 2023). **"The Salient Illustrated"** will start with a guided visit to the museum. After that, the group will visit the new workshop room at Klein Zwaanhof, the reconstructed farm in the middle of the former Northern Ypres Salient.

Afterwards the students will learn about the landscape via a guided walk using tablets. The educational team of the In Flanders Fields Museum will take them to the restored Yorkshire Trench & Dugout site and the battlefield cemeteries, Colne Valley Cemetery and Caesar's nose.

i [www.inflandersfields.be/en/bezoek-e/school-e](http://www.inflandersfields.be/en/bezoek-e/school-e)

## HOOGE CRATER MUSEUM

The museum offers primary schools an interactive and playful tour with or without a guide. An educational package can be utilised before the trip.

Secondary schools can opt for a guided interactive discovery with a guide or for a visit in which the pupils use a worksheet independently.

Visitors can also opt for a **guided tour** following the **traces of the war landscape** within a kilometer of the museum. British and German trenches, are visible including a crater forest with authentic mine craters and Hooge Crater cemetery with some 6000 graves.

Tailor made programmes are also possible and there is a cosy café to have lunch or your own picnic.

i [www.hoogecrater.com/en/schools/](http://www.hoogecrater.com/en/schools/)





## TALBOT HOUSE

The educational story tellers will show the Tales of Talbot House tour. For younger pupils, Private Arthur Pettifer can share some of his wartime adventures. Further presentations, workshops and outdoor guided tours are also available.

A visit to Talbot House is never complete without a complementary cup of tea by the wardens. Perhaps you fancy a scone or some ice cream? Bring your own picnic or enjoy one of our ploughman's lunches in the beautiful garden. Schools are encouraged to join in a chess tournament, sing by the old piano, reflect in the historic chapel, write letters home like a Tommy did or play some garden games. Talbot House are very happy to tailor visits accordingly.

 [www.talbothouse.be](http://www.talbothouse.be)



## PASSCHENDAELE MUSEUM

### ON TOUR WITH LISA, LOUIS AND MAURICE (PRIMARY SCHOOLS)

Pupils can go and explore with Lisa, her nephew Louis and their little friend Maurice. Lisa and Louis visit their grandfather, who collects WWI items in the chateau of Zonnebeke. Maurice takes the children on a discovery tour of the museum with the help of a folding map. Along the way, they can carry out fun assignments.

### WORKSHOP PASSCHENDAELE ARCHIVES (+14)

The participants can conduct their own research of a fallen soldier during the Battle of Passchendaele. Starting with a picture, a name and date they reconstruct what happened on the fatal day to 'their' soldier. After the workshop the participants can visit 'their' soldier at Tyne Cot Cemetery.

### MISSION POLYGON WOOD (+14)

Mission Polygon Wood combines personal stories of fallen soldiers with activities in Polygon Wood, where the CWGC Polygon Wood Cemetery, Buttes New British Cemetery and bunkers are situated. In Polygon Wood, the group is expected to reach the other side of Polygon Wood independently via four locations. However, they do not have a ready-made itinerary. In small groups, they must work together to use codes, carry out hands-on tasks and use British, Australian or New Zealand identity cards of fallen soldiers to find their way.

 [www.passchendaele.be/](http://www.passchendaele.be/)


# Flanders Fields accessible to all

Flanders Fields continue to attract tens of thousands of international visitors of all ages, some of whom will require assistance in terms of access.

Alterations are often required to ensure easy access for people with reduced mobility.

Our accessibility information is always based on objective and independent on-site inspections, which means that not all locations claiming to provide easy access have been included in our brochure. Please note that accessibility also depends on the visitor in question, as each disability or limitation differs. We therefore recommend contacting locations beforehand in case of specific accessibility concerns.

The following symbol  is used to indicate wheelchair-accessible options in this trade brochure:

The museums and/or sites that offer additional facilities for visually impaired visitors are indicated via the following symbol: 

All wheelchair accessible accommodations are indicated by the label:



(basically accessible) or



(independently accessible)

[www.visitflanders.com/accessibility](http://www.visitflanders.com/accessibility)  
[accessible@visitflanders.com](mailto:accessible@visitflanders.com)

 VISITFLANDERS

## Address

Grasmarkt 61, 1000 Brussels,  
Belgium

## Contact

(tel.) +32 (0)2 504 03 40  
(fax) +32 (0)2 504 04 05

## Brochure (2017)

[www.visitflanders.com/en/  
accessibility/brochures/](http://www.visitflanders.com/en/accessibility/brochures/)





# SUGGESTIONS FOR CAR OR COACH ITINERARIES FOR TOUR OPERATORS

1

## LANDSCAPES

29 APRIL 2023-31 AUGUST 2024

Ypres, Hoogdele, Zillebeke, Poperinge, Dranouter, Diksmuide, Vleteren, Lo-Reninge

### DAY 1 THE BATTLEFIELDS

#### Morning

- For Evermore exhibition, In Flanders Fields Museum, Ypres (exhibition ends 18 February 2024)
- Witnesses in the landscape exhibition, CWGC Ypres Information Centre

#### Afternoon

- Visit of cemeteries selected at Witnesses in the landscape
- VR experience, German cemetery Hoogdele

### DAY 2 ANOTHER VIEW ON THE LANDSCAPE

#### Morning

- Viewpoint The Front eye, Hooge Crater Museum, Zillebeke
- Talbotousians in War and Peace exhibition, Talbot house, Poperinge

#### Afternoon

- Musical cycle routes Modderland, Dranouter Music Centre
- Liksems exhibition, story cellar Diksmuide

### DAY 3 IN SEARCH OF THE DISAPPEARED LANDSCAPE

#### Morning

- Visit Invisible Landscape art installations by bike, Flanders Fields

#### Afternoon

- Walk the landscape bears witness in Vleteren
- Take a moment at the quiet zone on a former cemetery in Lo-reninge

2

## THE CANADIANS IN FLANDERS FIELDS

Ypres – Zonnebeke – Zillebeke

### DAY 1

#### Morning

- In Flanders Fields Museum, Ypres

#### Afternoon

- Essex Farm, where John McCrae wrote his world-famous poem
- 'The Brooding Soldier' memorial to the Canadian 1st Division during the first gas attack in 1915

#### Evening

- Menin Gate and Last Post, Ypres

### DAY 2

#### Morning

- Tyne Cot cemetery, where 1,011 Canadians are buried
- Memorial Museum Passchendaele 1917, Zonnebeke

#### Afternoon

- Crest Farm Canadian Memorial, Zonnebeke
- 85th Canadian Memorial, Zonnebeke
- Sanctuary Wood Cemetery and Hill 62 Canadian Memorial
- Crest Farm Canadian Memorial & Canada Gate, Zonnebeke

**i** Did you know that Vimy (France) is only one hour from Ypres?

3

## THE NEW ZEALANDERS IN FLANDERS FIELDS

Messines – Zonnebeke – Ypres

### DAY 1

#### Morning

- Tourist Information Point, Messines
- New Zealand soldier statue, Messines
- New Zealand Memorial, Messines
- Messines Ridge British Cemetery

#### Afternoon

- In Flanders Fields Museum, Ypres

#### Evening

- Menin Gate and Last Post, Ypres

### DAY 2

#### Morning

- Nine Elms British Cemetery in Poperinge, where 270 New Zealanders are buried, including the All Blacks captain Dave Gallaher
- Memorial Museum Passchendaele

#### Afternoon

- Polygon Wood, Zonnebeke
- New Zealand Memorial, Zonnebeke

**i** Did you know that Longueval and Le Quesnoy is only 1 hour and 30 minutes from Ypres?

# Europe, Flanders, Flanders Fields

NORTH SEA

Zeebrugge

Ostend

Bruges

## FLANDERS

Ghent

### FLANDERS FIELDS

De Panne

Veurne

Nieuwpoort

Koekelare

Diksmuide

Houthulst

Hooglede

Lo-Reninge

Vleteren

Langemark-Poelcapelle

Passchendaele

Zonnebeke

Ypres

Zillebeke

Roeselare

Waregem

Oudenaarde

Poperinge

Dranouter

Kemmel

Heuvelland

Messines

Wytchaete

Wervik

Menen

Kortrijk

Komen

## WALLONIA

## FRANCE

1

Landscape tour

2

The Canadians  
in Flanders Fields

3

The New Zealanders  
in Flanders Fields



4

## THE AUSTRALIANS IN FLANDERS FIELDS

Ypres - Zonnebeke - Ploegsteert

### DAY 1

#### Morning

- In Flanders Fields Museum

#### Afternoon

- Hill 60 and Caterpillar Crater
- Toronto Avenue Cemetery, Ploegsteert

#### Evening

- Menin Gate and Last post

### DAY 2

#### Morning

- Memorial Museum Passchendaele

#### Afternoon

- Polygon Wood
- Tyne Cot Cemetery
- Brothers in arms memorial, Zonnebeke

**i** Did you know that Fromelles is only a half an hour and Villers-Bretonneux 1 hour and 45 minutes from Ypres?

5

## THE WELSH IN FLANDERS FIELDS

Messines - Zonnebeke - Ypres

### DAY 1

#### Morning

- In Flanders Fields Museum

#### Afternoon

- Entry Point Ypres North
- Yorkshire Trench
- Welsh Cemetery
- Artillery Wood Cemetery where poet Hedd Wynn is buried
- The Welsh National Memorial Park

#### Evening

- Menin Gate and Last post

### DAY 2

#### Morning

- Memorial Museum Passchendaele

#### Afternoon

- Tyne Cot Cemetery

# FLANDERS FIELDS



4

The Australians in Flanders Fields

5

The Welsh in Flanders Fields

6

Classic tour in Flanders Fields

6

## CLASSIC TOUR IN FLANDERS FIELDS

Zonnebeke - Ypres - Poperinge - Messines - Heuvelland

### DAY 1

#### Morning

- Memorial Museum Passchendaele 1917, Zonnebeke
- Tyne Cot Cemetery & Visitor Centre, Zonnebeke
- German Military Cemetery, Langemark

#### Afternoon

- In Flanders Fields Museum, Ypres
- Evening: Menin Gate & Last Post, Ypres

### DAY 2

#### Morning

- Talbot House
- Death Cells
- Lijssenthoek Military Cemetery

#### Afternoon

- Tourist information point, Messines
- Pool of Peace
- Heuvelland Visitor Centre
- Bayernwald

7

## YPRES SALIENT TOUR

Ypres - Langemark

### DAY 1

#### Morning

- In Flanders Fields Museum, Ypres
- Menin Gate, Ypres

#### Afternoon

- John Mc Crae site, Ypres
- Entry Ypres point North, Boezinge (Ypres)
- Yorkshire Trench, Boezinge (Ypres)
- Artillery Wood Cemetery, Boezinge (Ypres)
- Guynemer Pavilion, Langemark

### DAY 2

#### Morning

- Entry point East, Zillebeke (Ypres)
- Hooze Crater Museum, Zillebeke (Ypres)
- Hill 62, Zillebeke (Ypres)

#### Afternoon

- Hill 60 and Caterpillar Crater, Zillebeke (Ypres)
- Entry point South\*, Zillebeke (Ypres)

8

## THE IRISH IN FLANDERS FIELDS

Ypres - Poperinge - Heuvelland - Messines

### DAY 1

#### Morning

- In Flanders Fields Museum, Ypres

#### Afternoon

- Talbot House, Poperinge
- Death Cells, Poperinge
- Lijssenthoek Military Cemetery, Poperinge

#### Evening

- Menin Gate & The Last Post, Ypres

### DAY 2

#### Morning

- Kemmel Visitor Centre
- Bayernwald, Heuvelland (Wyschaete)
- Pool of Peace, Heuvelland (Wyschaete)

#### Afternoon

- Island of Ireland Peace Park & Tower, Messines
- Messines tourist information point
- The grave of Major William Redmond, Loker (Heuvelland)

Please consult the Visit Flanders Website for other suggestions for tours: [www.visitflanders.com](http://www.visitflanders.com)

9

## OFF THE BEATEN TRACK TOUR: NORTHERN FLANDERS FIELDS

Veurne - Nieuwpoort - Diksmuide - Koekelare

### DAY 1

#### Morning

Free Motherland Veurne: the story of the radiologist Marie Curie. Westfront Visitor Centre, Nieuwpoort

#### Afternoon

Take a cruise between Nieuwpoort and Ypres, passing through the battlefields and past the war memorials, the Yser Tower, and the Death Trenches (summer only).

### DAY 2

#### Morning

- Trench of Death, Diksmuide
- Museum on the Yser, Diksmuide

#### Afternoon

- German military cemetery, Vladslo
- Käthe Kollwitz Museum, Koekelare
- Long Max Museum, Koekelare

--- 7 Ypres Salient tour

— 8 The Irish in Flanders Fields

— 9 Off the beaten track tour: Northern Flanders Fields





# Hotels

A selection of hotels in Flanders Fields or in nearby cities (such as Roeselare or Kortrijk) with twenty or more rooms.



Parking



Bar



Basic access for visitors with a disability



Independent access for visitors with a disability



Bike rental



Restaurant



Swimming pool



Wifi

## Hotel Pax / \*\*\*

Hotel Pax has luxury rooms with all mod cons. One of these rooms has been specially equipped for guests with disabilities. There are facilities for the organisation of conferences or meetings. Bicycle shed available.

Heilig Hartplein 2  
8600 Diksmuide  
+32 51 50 00 34  
[info@pax-hotel.be](mailto:info@pax-hotel.be)  
[www.pax-hotel.be](http://www.pax-hotel.be)



Total capacity: 36 rooms – 100 people



## Kasteelhoeve Viconia / \*\*\*

Historic chateau, situated very peacefully amidst of a nature reserve. Large garden with terrace. Fine cuisine, cosy atmosphere.

Kasteelhoevestraat 2  
8600 Stuivekenskerke (Diksmuide)  
+32 51 55 52 30  
[info@viconia.be](mailto:info@viconia.be)  
[www.viconia.be](http://www.viconia.be)



Total capacity: 15 rooms – 30 people



## Albion hotel / \*\*\*

Quiet, yet centrally located, close to the Menin Gate. This family run hotel excellent facilities with an intimate bar and provides packed lunches.

Sint-Jacobsstraat 28  
8900 Ypres  
+32 57 20 02 20  
[info@albionhotel.be](mailto:info@albionhotel.be)  
[www.albionhotel.be](http://www.albionhotel.be)



Total capacity: 32 rooms – 67 people



## Parkhotel Waregem / \*\*\*\*

Parkhotel Waregem is located at Waregem Expo and at walking distance from the city centre of Waregem. The gastrobar 'Zaborov' offers a mixture of Asian, Italian and Western cuisine. It is also the perfect setting to have a cocktail, local beer or wine.

Zuiderlaan 31  
8790 WAREGEM  
+32 56 980 800  
[info@parkhotelwaregem.be](mailto:info@parkhotelwaregem.be)  
[www.parkhotelwaregem.be](http://www.parkhotelwaregem.be)



Total capacity: 72 rooms – 140 people



### Ariane Hotel / \*\*\*\*

Privately owned hotel offering modern, air conditioned rooms. 7 minute walk from Ypres' historical centre. Surrounded by it's own private free parking and gardens with a pond and an open terrace. The restaurant is run by the Chef-owner and offers a fantastic cuisine.

Total capacity: 62 rooms – 124 people

Slachthuisstraat 58  
8900 Ypres  
+32 57 21 82 18  
[info@ariane.be](mailto:info@ariane.be)  
[www.ariane.be](http://www.ariane.be)



### Kasteelhof 't Hooghe / \*\*\*

Peacefully located in a romantic and historic setting on 'Hooghe'. Stylish rooms with all mod cons, private car park, garden, forest. Unique inner garden terrace.

Total capacity: 27 rooms – 54 people

Meenseweg 481  
8900 Ypres  
+32 57 46 87 87  
[info@thooghe.com](mailto:info@thooghe.com)  
<http://www.hotelkasteelhofthooghe.be/>



### Novotel Ieper centrum / \*\*\*

Novotel Ieper Centrum is situated in the historical centre of Ypres, close to the Market Square, the In Flanders Fields Museum, and the Menin Gate.

Total capacity: 128 rooms - 375 people

Sint-Jacobsstraat 15  
8900 Ypres  
+32 57 42 96 00  
[H3172@accor.com](mailto:H3172@accor.com)  
[www.novotel.com/ieper](http://www.novotel.com/ieper)



### Flanders Lodge / \*\*\*

Restaurant with regional dishes and local beers. Terrace with winter garden for visitors. Excellent base of operations for bicycle tours from the Westhoek to the sea, the border region with France, and the historic battlefields of WWI.

Total capacity: 40 rooms – 90 people

Albert Dehemlaan 19  
8900 Ypres  
+32 57 21 70 00  
[bw-ieper@skynet.be](mailto:bw-ieper@skynet.be)  
[www.bestwestern.be](http://www.bestwestern.be)

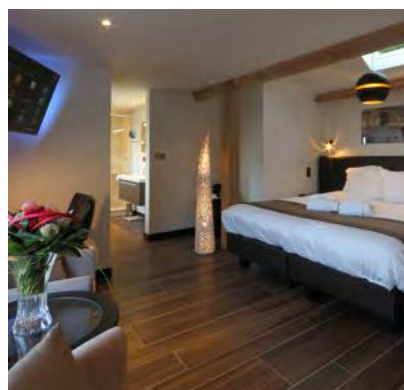


### Hostellerie Kemmelberg / \*\*\*\*

Cosy panoramahotel on the highest point of Flanders. Terraces and restaurant with views over the magnificent surroundings. Holder of the international ecolabel 'The Green Key'.

Total capacity: 23 rooms – 60 people

Kemmelbergweg 34  
8956 Kemmel  
+32 57 45 21 60  
[info@kemmelberg.be](mailto:info@kemmelberg.be)  
[www.montkemmel.com](http://www.montkemmel.com)



### Hotel Callecannes / \*\*\*

Set in the countryside, this hotel has comfortable rooms, pool and fitness centre with fine cuisine. Choose from the restaurant, bar or coffee shop.

Total capacity: 37 rooms – 74 people

Callicannesweg 12  
8978 Watou (Poperinge)  
+32 57 38 88 08  
[www.hotel-callecanes.be](http://www.hotel-callecanes.be)  
[info-reservatie@hotel-callecanes.be](mailto:info-reservatie@hotel-callecanes.be)





### Hotel Damier / \*\*\*\*

A charming 4 star hotel with a classified facade from 1769, situated in the city center of Kortrijk. This luxury hotel charms guests for over hundreds of years with its stylish and elegant rooms. The vivid atmosphere invites you to enjoy the iconic building. The hotel houses a restaurant, a brasserie and a high-end cocktailbar called Sprezze. Private parking on spot.

Total capacity: 65 rooms – 126 people

Grote Markt 41  
8500 Kortrijk  
+32 56 22 15 47  
[info@hoteldamier.be](mailto:info@hoteldamier.be)  
[www.hoteldamier.be](http://www.hoteldamier.be)



### Parkhotel / \*\*\*\*

Comfortable 4-star hotel located a few steps away from the centre of Kortrijk. French cuisine at very attractive prices. Trendy Jules bar for cocktails, local drinks and wines. The new Wellness center offers a place to retreat.

Total capacity: 155 rooms – 260 people

Stationsplein 2  
8500 Kortrijk  
+32 56 22 03 03  
[info.parkhotel@parkhotel.be](mailto:info.parkhotel@parkhotel.be)  
[www.parkhotel.be](http://www.parkhotel.be)

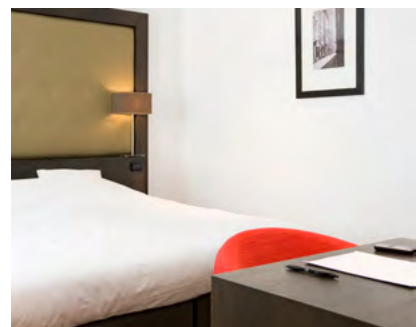


### The Market by Parkhotel / \*\*\*

The Market by Parkhotel is a full-facility hotel in the heart of Kortrijk, between the station and the Grote Markt. Perfect for business people or tourists visiting Kortrijk.

Total capacity: 56 rooms - 91 persons

Graanmarkt 6  
8500 Kortrijk  
+32 56 21 97 21  
[info@themarkethotel.be](mailto:info@themarkethotel.be)  
[www.themarketbyparkhotel.be](http://www.themarketbyparkhotel.be)



### Hotel Ibis Style Kortrijk Expo / \*\*\*

Standard rooms with excellent bathrooms with shower, superior rooms and junior suites.

Total capacity: 80 rooms – 160 people

President 1  
8500 Kortrijk  
+32 56 20 06 87  
[ha240@accor.com](mailto:ha240@accor.com)  
[www.ibis.com](http://www.ibis.com)



### Hotel Messeyne / \*\*\*\*

Hotel Messeyne is located in the historically interesting Groeningestraat, in the centre. In the pleasant bistro one can enjoy excellent cuisine, while the historical garden offers a beautiful place to relax. Gym facilities, sauna, and hammam.

Groeningestraat 17  
8500 Kortrijk  
+32 56 21 21 66  
[hotel@messeyne.com](mailto:hotel@messeyne.com)  
[www.messeyne.com](http://www.messeyne.com)



Total capacity: 28 rooms – 56 people



### D-hotel / \*\*\*\*

d-hotel is a unique marriage between a historic site and a new futuristic design. It has an authentic, protected windmill from 1841 as well as a protected inner farmhouse square. The concrete structure of the hotel is combined with large surfaces of glass windows. These simple materials make you feel relaxed and provide a sense of openness. D-hotel offers a luxurious spa centre and an outdoor swimming pool (open from 1 July to 31 August), a cosy lounge bar, and a wonderful bistro.

Abdijmolenweg 1  
8510 Marke  
+32 56 21 21 00  
[info@d-hotel.be](mailto:info@d-hotel.be)  
[www.d-hotel.be](http://www.d-hotel.be)



Total capacity: 44 rooms – 90 people



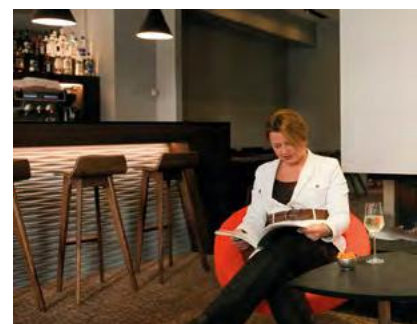
### Square Hotel / \*\*\*

This hotel has a superb location, just a short walk from the market square. Hotel Square has 26 lovely bedrooms, with all the comfort and amenities you may expect from a three-star hotel.

Groeningestraat 39  
8500 Kortrijk  
+32 56 28 89 50  
[info@squarehotel.be](mailto:info@squarehotel.be)  
[www.squarehotel.be](http://www.squarehotel.be)



Total capacity: 26 rooms – 52 people



### Hotel Cosmopolite / \*\*\*

Fully refurbished hotel close to the sea. Two restaurants and bar. Special winter weekend packages. Free use of sauna and heated indoor swimming pool at the Hotel Carlton.

Total capacity: 128 rooms – 320 people

Albert I laan 141  
8620 Nieuwpoort  
+32 58 23 33 66  
[info@cosmopolite.be](mailto:info@cosmopolite.be)  
[www.hotelcosmopolite.be](http://www.hotelcosmopolite.be)



### Parkhotel Roeselare / \*\*\*

The Parkhotel is located in the lively center of Roeselare. Everything Roeselare has to offer is within walking distance. By walking 50 metres, you will find yourself in the shopping street of the city. At night, you can dine in the many restaurants that the city of Rodenbach has to offer. Whether it's culinary or just a delicious brasserie, there's something for everyone! The hotel consists of 3 buildings with 80 modern rooms with all the comfort so that both business guests and tourists will have a pleasant stay. A big

advantage of the hotel is our free and secured parking lot!

Total capacity: 80 rooms – 160 people

Vlamingstraat 8  
8800 Roeselare  
+32 51 26 31 31  
[info@phr.be](mailto:info@phr.be)  
[www.phr.be](http://www.phr.be)



### De Vijfwegen / \*\*\*

800 metres from the E403, the perfect base of operations for trips to Bruges-Ypres-Kortrijk. The hotel is attractively furnished. You can enjoy a delicious meal or an aperitif on the terrace at Bistro Frogs.

Total capacity: 11 rooms – 22 people

Hoogstraat 190  
8800 Rumbeke (Roeselare)  
+32 51 24 34 72  
[info@hotelvijfwegen.be](mailto:info@hotelvijfwegen.be)  
[www.hotelvijfwegen.be](http://www.hotelvijfwegen.be)



### Hotel Mercure / \*\*\*\*

The stylish rooms are equipped with all modern comforts and offer a variety of services. A Superior Access + Room provides all facilities required by wheelchair-users. The Mercure Team pulls out all the stops to cater for every wish of our guests, to guarantee them the best possible experience.

Total capacity: 87 rooms – 176 people

Kwadestraat 149  
8800 Rumbeke (Roeselare)  
+32 51 43 20 00  
[info@mercurooeselare.be](mailto:info@mercurooeselare.be)  
[www.mercurooeselare.be](http://www.mercurooeselare.be)





# Youth Accommodation

This is a selection of youth hostels in Flanders Fields and Kortrijk that offer catering services.

## De Lork

De Lork is located in the southernmost tip of the West-Flanders Heuvelland region, on the flank of the highest hill, the Kemmelberg. This youth centre is ideal for all kinds of groups and trips. Every group has their own private dorms and dinner room. A large gym is available and can be booked. In the area you can walk, cycle, swim, play bowling and visit of course the WWI-sites.

Number of beds: 192 people (35 rooms 1-4 p., 12 rooms 5-8 p.)

Kattekerkhofstraat 2  
8956 Kemmel  
+32 57 44 59 70  
[info@delork.be](mailto:info@delork.be)  
[www.delork.be](http://www.delork.be)



## The Menin Gate

Situated near the Menin Gate, this is a great location for visitors wishing to explore the war history of the city of Ypres. The old house has a very authentic character. For groups of 30 to 52.

Number of beds: Groups of 25 to 55 (55 beds in 12 rooms, rooms of 1 to 9 beds)

Kauwekijnstraat 1  
8900 Ypres  
+32 57 21 20 01  
[info@meningate.com](mailto:info@meningate.com)  
[www.meningate.eu](http://www.meningate.eu)



## The Salient

The Salient is a historical building in the centre of Ypres, located only 160m from the market square. Here, they can accommodate groups of up to 102 people in a quiet area, even though it's located in the heart of the West-Flemish city of peace. The ground floor has recently been renovated entirely and opens onto the terrace and large private garden.

Number of beds: Groups of 25 to 91 (91 beds in 19 rooms, rooms of 1 to 9 beds)

D'Hondstraat 27  
8900 Ypres  
+32 57 21 20 01  
[info@salient.be](mailto:info@salient.be)  
[www.meningate.eu](http://www.meningate.eu)



## The Poppies 1&2

Home sweet home for groups of up to 129 and a minimum of 25 in the historical center of Ypres. Located next to the market square of Ypres, The Poppies 1 & 2 is the ideal accommodation for history tours. Your stay in these authentic, classic, old School Hotel combined with its unique location will make your trip to the Ypres Salient unforgettable.

Number of beds: Groups of 25 to 130 (130 beds in 30 rooms, rooms of 1 to 12 beds)

Gustave de Stuersstraat 6  
8900 Ypres  
+32 57 21 20 01  
[info@thepoppies.be](mailto:info@thepoppies.be)  
[www.meningate.eu](http://www.meningate.eu)



## De Iep

De Iep is just 25 minutes on foot from the centre of Ypres. This accommodation is very popular with schools. The good price-quality ratio and the flexibility with regards to meals are a plus. A good place to rest after a busy day. The friendly and dedicated staff ensures a successful stay.

Poperingseweg 34  
8900 Ypres  
+32 57 20 88 11  
[info@deiep.be](mailto:info@deiep.be)  
[www.deiep.be](http://www.deiep.be)

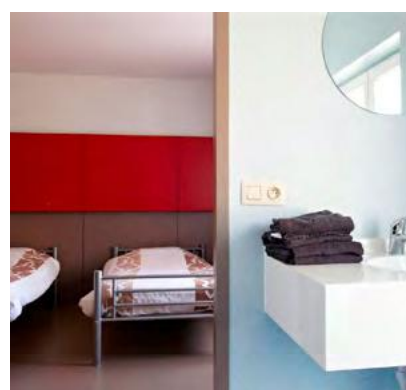


Number of beds: 60

## Munchenhof

This hostel is situated 7 km from Ypres, surrounded by numerous war remembrances. Our Establishment has been developed over 3 generations and the 4th generation is waiting to take over. For our family, hospitality is the local point and an enthusiastic team will ensure your stay is unforgettable. The hostel is separated into 2 blocks and can lodge 2 groups at the same time but still can offer sole occupancy in each block. After dinner, groups can meet and be competitive at the outdoor fields to play football, basketball, etc.

Markt 43  
8920 Langemark  
+ 32 57 48 83 13  
[nathalie@munchenhof.be](mailto:nathalie@munchenhof.be)  
[www.munchenhof.be](http://www.munchenhof.be)



Number of beds: 128 (35 rooms)

You can also stay in Bruges, Ghent, or towns and cities on the coast. Please have a look at their websites:

[www.belgiancoast.co.uk](http://www.belgiancoast.co.uk)

<https://bezoekers.brugge.be/staying-in-bruges>

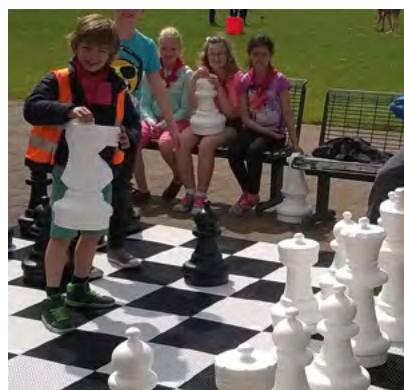
<https://visit.gent.be/en/accommodation>

## Peace Village Hostel

The hostel is set in the countryside of the Messines Ridge. As a former battlefield, the view from the terraces is dotted with cemeteries and memorials. The spacious duplex studios are all en-suite and have cosy & contained set-up. Besides several meeting and conference rooms, there is also an own in-house restaurant and bar. The facilities include a large parking, laundry, lockers, bicycle storage, bonfires, honesty bar & sports cupboard for each group and many sport facilities including two football pitches, basketball court, ping-pong, large chess game, etc. They also provide assistance with tailoring your itinerary and organised activities such as torch-lit evening walks on the Great War, beer tastings and pub games.

Number of beds: 165 (11 rooms 2 p., 24 rooms 1-4 p., 8 rooms 6 p.)

Nieuwkerkestraat 9a  
8957 Mesen  
+32 57 22 60 40  
[info@peacevillage.be](mailto:info@peacevillage.be)  
[www.peacevillage.be](http://www.peacevillage.be)



## Oude Abdij

A former abbey and brewery. An ideal base for exploring the Westhoek region. Loved by cyclists. Generous discount for group stays..

Total capacity: 58 rooms – 195 people

Noordstraat 3  
8647 Lo-Reninge  
+32 58 28 82 65  
[info@oudeabdij.com](mailto:info@oudeabdij.com)  
[www.oudeabdij.com](http://www.oudeabdij.com)



## Hostel Groeninghe

This hostel opened in 2015 and offers a restaurant on-site, a bar, and two meeting rooms. The hostel is within walking distance of the station and historical centre. With Kortrijk close to the French border, this is an ideal city from which to explore the north of France too..

Number of beds: 123 (29 rooms 1-4p., 9 rooms 5-8p.)

Passionistenlaan 1a  
8500 Kortrijk  
+32 56 98 06 92  
[kortrijk@vjh.be](mailto:kortrijk@vjh.be)  
[www.jeugdherbergen.be/kortrijk](http://www.jeugdherbergen.be/kortrijk)





# Trade & Press information

## **DMCs/Incoming Operators**

### **All About Belgium**

AAB works in a very flexible way and offers tailor-made WWI tours for groups.

Kathleen Vermeiren

[www.aab-allaboutbelgium.be](http://www.aab-allaboutbelgium.be)

[kathleen.vermeiren@aab-](mailto:kathleen.vermeiren@aab-allaboutbelgium.be)

[allaboutbelgium.be](mailto:kathleen.vermeiren@aab-allaboutbelgium.be)

+32 53 80 98 18

### **Belgian Biking**

Gert Verschueren

[www.belgianbiking.be](http://www.belgianbiking.be)

[belgianbiking@zuiderhuis.be](mailto:belgianbiking@zuiderhuis.be)

+32 (0)9 233 45 33

### **De Boeck Incoming & Events**

Chantal Quirijnen

[www.deboeck-incoming.com](http://www.deboeck-incoming.com)

[info@deboeck-incoming.com](mailto:info@deboeck-incoming.com)

+32 2 274 23 80

### **Focus Flanders**

Focus Flanders offers multi-day tours that focus on the Canadian, Australian, or Irish involvement in WWI.

Michel Deswaene

[www.focusflanders.com](http://www.focusflanders.com)

[michel.deswaene@omniatravel.be](mailto:michel.deswaene@omniatravel.be)

+ 32 9 269 90 62

## **Images**

There is a comprehensive range of images suitable for promoting Flanders Fields on

[portal.media.visitflanders.com](http://portal.media.visitflanders.com)

## EDITION 2022

Note: This document will be regularly updated with new information as it becomes available. The latest version is always available to download from: [www.visitflanders.com](http://www.visitflanders.com) and has been compiled with information provided to Visit Flanders by partners throughout Belgium and around the world. All information is correct to the best of our knowledge, at the time of going to print (October 2022). However, no liability can be accepted for any loss resulting from use of information contained in this document. Please check opening dates and times before travelling.

## RESPONSIBLE PUBLISHER

Peter De Wilde, VISIT**FLANDERS**, Grasmarkt 61, 1000 Brussels, Belgium

## LEGAL DEPOSIT

D/2022/5635/36/4



**1914-18**  
Flanders Fields

© Nick Mo

[FLANDERSFIELDS1418.COM](http://FLANDERSFIELDS1418.COM)



VISIT  
**FLANDERS**